

CHIHUAHUA

## ---RED FEDERAL LIBRE---

1 Cd. Juárez - Janos	MEX-002
2 Chihuahua - El Sueco	MEX-045
3 Chihuahua - Ojinaga	MEX-016
4 Delicias - Chihuahua (Libre)	MEX-045
5 El Sueco - Janos	MEX-010
6 Ent. Ciudad Camargo - Saucillo	MEX-045
7 Ent. La Zarca - Hidalgo del Parral	MEX-045
8 Ent. Nuevo Palomas - Hidalgo del Parral (Vía Corta)	MEX-024
9 Gómez Palacio - Jiménez	MEX-049
10 Hidalgo del Parral - Guadalupe y Calvo	MEX-024
11 Hidalgo del Parral - Jiménez	MEX-045
12 Janos - Agua Prieta	MEX-002
13 La Junta - Lim. Edos. Term. Chih. Ppia. Son (Yécora)	MEX-016
14 Libramiento de Delicias - Mecoqui	MEX-045
15 Porvenir - Cd. Juárez	MEX-002
16 Ramal a Aeropuerto de Chihuahua	MEX-016
17 Ramal a Palomas	MEX-002
18 San Jerónimo - Santa Teresa	MEX-002
19 Villa Ahumada - Cd. Juárez (Libre)	MEX-045

## ---RED FEDERAL DE CUOTA---

20 Camargo - Delicias (Cuota)	MEX-045D
21 Chihuahua - Sacramento (Cuota)	MEX-045D
22 El Sueco - Villa Ahumada (Cuota)	MEX-045D
23 Gómez Palacio - Corralitos (Cuota)	MEX-049D
24 Jiménez - Camargo (Cuota)	MEX-045D
25 Libramiento Oriente Chihuahua (Cuota)	MEX-045D
26 Libramiento Sur de Cd. Juárez (Cuota)	MEX-045D

## ---RED ESTATAL LIBRE---

27 Ahumada - Ricardo Flores Magón	CHIH
28 Camargo - Jiménez	CHIH-049
29 Cuauhtémoc - Buenaventura	CHIH
30 Delicias - Saucillo	CHIH-007
31 Ent. Peña Blanca - Ent. La Concha	CHIH
32 Ent. Puerto Justo - Ent. Guachochic	CHIH
33 Lázaro Cárdenas - Ent. Colonia San José	CHIH-004
34 Libramiento de Hidalgo del Parral	CHIH
35 Libramiento de Jiménez	CHIH
36 Mecoqui - Julimes	CHIH-005
37 Ramal a San Pedro Creel	CHIH-025
38 Samachique - Batopilas	CHIH
39 San Juanito - Ent. Basaseachi	CHIH
40 San Pedro Creel - Guachochi	CHIH-025
41 T. C. (Camargo - Jiménez) - Ojinaga	CHIH-018
42 T. Julimes - La Boquilla	CHIH-018

## ---RED ESTATAL DE CUOTA---

43 Ent. El Álamo - Ent. Ricardo Flores Magón (Cuota)	CHIH-D
44 Ricardo Flores Magón - Galeana (Cuota)	CHIH-D
45 Samalayuca - San Jerónimo (Cuota)	CHIH-D
46 T. C. (Chihuahua - Ojinaga) - La Mula (Cuota)	CHIH-D

## ---CARRETERAS INTEGRADAS POR TRAMOS FEDERALES Y ESTATALES---

47 Chihuahua - Madera	CHIH-D-MEX-001-CHIH
48 Ent. Agua Caliente - El Terrero	CHIH-MEX





CHIHUAHUA

1 CARR: Cd. Juárez - Janos

CLAVE: 08041

RUTA: MEX-002

AÑO: 2025

LUGAR	ESTACION				CLASIFICACION VEHICULAR EN PORCIENTO										COORDENADAS					
	KM	TE	SC	TDPA	M	A	B	C2	C3	T3S2	T3S3	T3S2R4	OTROS	A	B	C	K'	D	LATITUD	LONGITUD
T. C. El Sueco - Cd. Juárez	0.00	3	1	10792	3.0	74.0	4.0	9.8	2.5	4.8	0.7	1.0	0.2	77.0	4.0	19.0	0.069	0.522	31.605557	-106.487790
T. C. El Sueco - Cd. Juárez	0.00	3	2	10759	2.7	73.8	4.1	10.0	2.9	5.0	0.5	0.9	0.1	76.5	4.1	19.4	0.081	0.522	31.605444	-106.487755
T. C. Jerónimo - Sta. Teresa	22.40																			
T. Der. Palomas	112.00	1	0	2358	2.3	76.8	2.5	3.3	1.5	8.5	1.3	3.2	0.6	79.1	2.5	18.4	0.070	0.576	31.471313	-107.609005
Ascensión	170.95	1	0	4038	1.8	76.8	3.2	5.1	0.9	8.4	1.2	2.1	0.5	78.6	3.2	18.2	0.063	0.518	31.105045	-107.986872
Janos	205.00	1	0	3487	1.2	78.8	2.7	6.0	1.2	7.0	0.7	2.1	0.3	80.0	2.7	17.3	0.085	0.519	30.896948	-108.182116

2 CARR: Chihuahua - El Sueco

CLAVE: 08419

RUTA: MEX-045

AÑO: 2025

LUGAR	ESTACION				CLASIFICACION VEHICULAR EN PORCIENTO										COORDENADAS					
	KM	TE	SC	TDPA	M	A	B	C2	C3	T3S2	T3S3	T3S2R4	OTROS	A	B	C	K'	D	LATITUD	LONGITUD
Chihuahua	0.00																			
T. C. Chihuahua - Sacramento (Cuota)	16.70																			
San Cristóbal	24.00	1	0	4378	2.4	73.1	2.1	3.5	2.1	13.7	2.2	0.8	0.1	75.5	2.1	22.4	0.088	0.583	28.799531	-106.217092
T. C. Chihuahua - Sacramento (Cuota)	32.00	1	0	5142	2.2	76.6	1.6	3.7	1.5	11.4	2.1	0.6	0.3	78.8	1.6	19.6	0.099	0.622	28.858624	-106.219353
T. C. Chihuahua - Sacramento (Cuota)	32.00	3	1	7588	4.0	66.8	5.5	5.1	1.2	12.0	2.2	2.5	0.7	70.8	5.5	23.7	0.075	0.505	28.869498	-106.228450
T. C. Chihuahua - Sacramento (Cuota)	32.00	3	2	7580	3.7	66.8	5.3	5.3	1.3	12.2	1.8	2.7	0.9	70.5	5.3	24.2	0.095	0.505	28.869455	-106.228554
T. Der. El Sauz	55.38	3	1	6539	2.3	66.0	4.5	5.3	1.4	15.0	1.9	3.2	0.4	68.3	4.5	27.2	0.073	0.501	29.053061	-106.329727
T. Der. El Sauz	55.38	3	2	6475	2.4	65.6	4.7	5.2	1.3	14.8	2.3	2.9	0.8	68.0	4.7	27.3	0.091	0.501	29.052606	-106.329885
T. Izq. El Terrero	60.67	3	1	6900	0.9	66.6	4.6	3.1	0.7	18.2	2.0	2.9	1.0	67.5	4.6	27.9	0.074	0.585	29.098615	-106.342286
T. Izq. El Terrero	60.67	3	2	6192	1.1	67.0	4.2	2.9	1.0	18.0	1.9	3.0	0.9	68.1	4.2	27.7	0.071	0.585	29.098529	-106.342555
Ent. El Sueco	155.87	1	1	4701	3.7	60.5	6.3	6.0	1.0	17.7	1.9	2.1	0.8	64.2	6.3	29.5	0.085	0.585	29.863291	-106.392288
Ent. El Sueco	155.87	1	2	4884	3.7	61.3	6.0	5.8	1.3	18.0	1.6	1.7	0.6	65.0	6.0	29.0	0.102	0.585	29.864088	-106.392683

3 CARR: Chihuahua - Ojinaga

CLAVE: 08042

RUTA: MEX-016

AÑO: 2025

LUGAR	ESTACION				CLASIFICACION VEHICULAR EN PORCIENTO										COORDENADAS					
	KM	TE	SC	TDPA	M	A	B	C2	C3	T3S2	T3S3	T3S2R4	OTROS	A	B	C	K'	D	LATITUD	LONGITUD
Chihuahua	0.00																			
T. Der. Aeropuerto	6.50	1	1	32297	1.3	85.2	1.4	7.8	1.0	2.2	0.4	0.5	0.2	86.5	1.4	12.1	0.081	0.531	28.686393	-106.015266
T. Der. Aeropuerto	6.50	1	2	31317	1.5	86.1	1.3	7.5	0.8	2.0	0.3	0.4	0.1	87.6	1.3	11.1	0.074	0.531	28.686477	-106.015397
T. Der. Aeropuerto	6.50	3	1	12405	1.4	85.2	2.2	8.9	0.7	0.8	0.5	0.2	0.1	86.6	2.2	11.2	0.087	0.516	28.692296	-106.011799
T. Der. Aeropuerto	6.50	3	2	12398	1.2	86.2	2.0	8.5	0.6	0.6	0.3	0.4	0.2	87.4	2.0	10.6	0.083	0.516	28.692330	-106.011935
Aldama	29.00	1	1	6513	1.3	85.9	2.6	7.6	0.9	1.0	0.4	0.3	0.0	87.2	2.6	10.2	0.084	0.505	28.817834	-105.927206
Aldama	29.00	1	2	6581	1.4	86.7	2.3	7.4	0.8	0.7	0.4	0.3	0.0	88.1	2.3	9.6	0.076	0.505	28.817960	-105.927294

CHIHUAHUA

3 CARR: Chihuahua - Ojinaga

CLAVE: 08042

RUTA: MEX-016

AÑO: 2025

LUGAR	ESTACION				CLASIFICACION VEHICULAR EN PORCIENTO													COORDENADAS		
	KM	TE	SC	TDPA	M	A	B	C2	C3	T3S2	T3S3	T3S2R4	OTROS	A	B	C	K'	D	LATITUD	LONGITUD
Aldama	29.00	3	0	2959	1.1	87.9	1.4	4.5	1.0	2.9	0.7	0.4	0.1	89.0	1.4	9.6	0.104	0.683	28.851728	-105.871610
El Morrión	68.85	3	0	2328	0.6	88.7	1.9	4.3	0.9	2.0	0.8	0.5	0.3	89.3	1.9	8.8	0.091	0.564	29.064174	-105.604347
Coyame	141.00	1	0	280	1.5	80.6	0.4	13.2	2.2	0.8	0.9	0.2	0.2	82.1	0.4	17.5	0.125	0.543	29.446849	-105.097936
Ojinaga	224.00	1	0	2661	1.3	92.2	0.4	5.5	0.5	0.1	0.0	0.0	0.0	93.5	0.4	6.1	0.101	0.582	29.540026	-104.445051

4 CARR: Delicias - Chihuahua (Libre)

CLAVE: 08418

RUTA: MEX-045

AÑO: 2025

LUGAR	ESTACION				CLASIFICACION VEHICULAR EN PORCIENTO													COORDENADAS		
	KM	TE	SC	TDPA	M	A	B	C2	C3	T3S2	T3S3	T3S2R4	OTROS	A	B	C	K'	D	LATITUD	LONGITUD
Delicias	138.00																			
T. C. Libramiento de Delicias - Meoqui	150.10	3	1	11369	5.4	67.6	4.0	4.4	2.0	12.3	1.5	2.2	0.6	73.0	4.0	23.0	0.076	0.585	28.294686	-105.503892
T. C. Libramiento de Delicias - Meoqui	150.10	3	2	11098	5.2	68.9	3.7	4.1	1.8	12.6	1.3	1.9	0.5	74.1	3.7	22.2	0.089	0.585	28.294617	-105.503951
X. C. Santa Cruz Rosales - Las Nieves	156.50	1	1	9819	5.0	68.6	4.1	4.5	1.8	11.9	1.3	2.2	0.6	73.6	4.1	22.3	0.095	0.524	28.323611	-105.543427
X. C. Santa Cruz Rosales - Las Nieves	156.50	1	2	9828	5.3	68.3	4.0	4.5	1.6	12.0	1.5	2.0	0.8	73.6	4.0	22.4	0.093	0.524	28.323550	-105.543488
X. C. Orinda - Nuevo San Lucas	159.00	1	1	9664	4.2	68.2	5.0	3.6	1.5	12.4	1.7	2.4	1.0	72.4	5.0	22.6	0.077	0.575	28.334906	-105.558865
X. C. Orinda - Nuevo San Lucas	159.00	1	2	9828	4.0	67.6	4.7	3.7	1.6	12.6	2.1	2.6	1.1	71.6	4.7	23.7	0.079	0.575	28.334677	-105.558702
T. Der. Lazáro Cárdenas	166.87	1	1	10616	5.3	67.5	4.3	5.5	2.7	11.0	1.3	1.9	0.5	72.8	4.3	22.9	0.085	0.563	28.378367	-105.618229
T. Der. Lazáro Cárdenas	166.87	1	2	10982	5.6	67.3	4.2	5.3	2.4	11.1	1.4	2.2	0.5	72.9	4.2	22.9	0.090	0.563	28.376297	-105.615578
T. Der. Lazáro Cárdenas	166.87	3	1	8725	5.3	64.0	5.0	5.6	1.4	14.0	1.7	2.4	0.6	69.3	5.0	25.7	0.088	0.619	28.391103	-105.635545
T. Der. Lazáro Cárdenas	166.87	3	2	9649	5.0	65.5	4.7	5.4	1.5	13.8	1.5	2.1	0.5	70.5	4.7	24.8	0.093	0.619	28.391054	-105.635787
T. C. Libramiento Oriente Chihuahua (Cuota)	208.40	1	1	11014	3.0	70.8	5.2	5.0	1.7	10.5	1.4	2.0	0.4	73.8	5.2	21.0	0.098	0.510	28.569952	-105.955953
T. C. Libramiento Oriente Chihuahua (Cuota)	208.40	1	2	11098	2.8	72.0	4.9	4.7	1.9	10.7	1.0	1.8	0.2	74.8	4.9	20.3	0.085	0.510	28.569720	-105.956135
T. Der. Aquiles Serdán	210.00	1	1	9243	3.7	73.6	4.4	5.8	1.9	7.8	1.2	1.4	0.2	77.3	4.4	18.3	0.123	0.719	28.585564	-105.959935
T. Der. Aquiles Serdán	210.00	1	2	9316	4.0	72.6	4.1	5.5	2.0	8.0	1.5	1.8	0.5	76.6	4.1	19.3	0.085	0.719	28.585697	-105.960153
Chihuahua	222.56																			

5 CARR: El Sueco - Janos

CLAVE: 08037

RUTA: MEX-010

AÑO: 2025

LUGAR	ESTACION				CLASIFICACION VEHICULAR EN PORCIENTO													COORDENADAS		
	KM	TE	SC	TDPA	M	A	B	C2	C3	T3S2	T3S3	T3S2R4	OTROS	A	B	C	K'	D	LATITUD	LONGITUD
El Sueco	0.00	3	0	344	2.5	72.1	1.8	20.2	1.2	2.1	0.1	0.0	0.0	74.6	1.8	23.6	0.116	0.500	29.893593	-106.401529
Ricardo Flores Magón	59.00	3	0	4438	2.1	67.8	4.0	3.7	1.7	15.4	3.1	1.9	0.3	69.9	4.0	26.1	0.073	0.546	29.946172	-106.977854
T. C. Ricardo Flores Magón - Galeana (Cuota)	68.90																			
Buenaventura	114.00	1	0	1723	3.3	85.1	2.7	6.4	0.7	1.3	0.4	0.1	0.0	88.4	2.7	8.9	0.095	0.742	29.853533	-107.444500
Buenaventura	114.00	3	0	4623	1.9	84.1	0.7	11.1	0.6	0.9	0.6	0.1	0.0	86.0	0.7	13.3	0.075	0.507	29.867140	-107.478492

CHIHUAHUA

5 CARR: El Sueco - Janos

CLAVE: 08037

RUTA: MEX-010

AÑO: 2025

LUGAR	ESTACION				CLASIFICACION VEHICULAR EN PORCIENTO										COORDENADAS						
	KM	TE	SC	TDPA	M	A	B	C2	C3	T3S2	T3S3	T3S2R4	OTROS	A	B	C	K'	D	LATITUD	LONGITUD	
T. C. Ricardo Flores Magón - Galeana (Cuota)	154.90																				
Nuevo Casas Grandes	195.00	3	0	9102	3.6	70.5	6.0	8.9	2.5	3.3	0.8	3.9	0.5	74.1	6.0	19.9	0.084	0.652	30.455531	-107.915592	
Janos	257.00	1	0	5304	2.0	67.3	3.1	4.6	1.1	13.8	3.3	3.8	1.0	69.3	3.1	27.6	0.063	0.581	30.884647	-108.184799	

6 CARR: Ent. Ciudad Camargo - Saucillo

CLAVE: 08417

RUTA: MEX-045

AÑO: 2025

LUGAR	ESTACION				CLASIFICACION VEHICULAR EN PORCIENTO										COORDENADAS					
	KM	TE	SC	TDPA	M	A	B	C2	C3	T3S2	T3S3	T3S2R4	OTROS	A	B	C	K'	D	LATITUD	LONGITUD
Camargo	72.00	3	0	4074	2.6	77.4	1.7	5.1	2.5	7.7	1.9	0.9	0.2	80.0	1.7	18.3	0.076	0.552	27.726525	-105.191316
T. Der. La Cruz	88.60	3	0	3177	3.4	74.8	2.1	5.5	2.2	7.5	2.6	1.4	0.5	78.2	2.1	19.7	0.081	0.629	27.870500	-105.213941
Saucillo	109.50	1	0	4142	2.6	89.9	1.5	2.8	1.1	1.4	0.5	0.2	0.0	92.5	1.5	6.0	0.084	0.578	28.018747	-105.290304

7 CARR: Ent. La Zarca - Hidalgo del Parral

CLAVE: 00488

RUTA: MEX-045

AÑO: 2025

LUGAR	ESTACION				CLASIFICACION VEHICULAR EN PORCIENTO										COORDENADAS					
	KM	TE	SC	TDPA	M	A	B	C2	C3	T3S2	T3S3	T3S2R4	OTROS	A	B	C	K'	D	LATITUD	LONGITUD
Ent. La Zarca	238.60	3	0	1429	3.1	78.9	2.2	4.2	3.5	3.7	2.8	1.1	0.5	82.0	2.2	15.8	0.081	0.526	25.786736	-104.766398
T. Der. Ceballos	284.75	1	0	1604	1.5	79.6	4.2	4.1	2.3	4.3	2.9	0.7	0.4	81.1	4.2	14.7	0.095	0.539	26.135195	-105.025191
T. Der. Ceballos	284.75	3	0	1917	1.1	86.1	3.2	3.3	0.8	3.1	2.0	0.3	0.1	87.2	3.2	9.6	0.078	0.507	26.142323	-105.030528
T. Izq. Canutillo	329.27	3	0	1508	2.2	82.9	3.8	4.0	1.5	3.1	2.0	0.4	0.1	85.1	3.8	11.1	0.097	0.623	26.389612	-105.353597
Las Nieves	334.80	3	0	2010	4.1	79.0	3.5	4.4	2.6	3.1	2.1	0.7	0.5	83.1	3.5	13.4	0.099	0.535	26.400069	-105.405602
T. Izq. Ocampo	346.90	3	0	1601	4.8	78.4	3.2	5.1	2.1	3.0	2.3	0.7	0.4	83.2	3.2	13.6	0.078	0.504	26.446617	-105.494959
Lim. Edos. Term. Dgo. Ppia. Chih.	360.57																			
Matamoros	386.00	1	0	1537	3.0	79.2	3.4	4.8	2.3	3.5	3.2	0.5	0.1	82.2	3.4	14.4	0.079	0.590	26.742973	-105.579010
Hidalgo del Parral	408.10	1	0	4226	3.3	86.5	1.7	3.5	1.5	1.5	1.1	0.7	0.2	89.8	1.7	8.5	0.076	0.516	26.917882	-105.640756

8 CARR: Ent. Nuevo Palomas - Hidalgo del Parral (Vía Corta)

CLAVE: 08811

RUTA: MEX-024

AÑO: 2025

LUGAR	ESTACION				CLASIFICACION VEHICULAR EN PORCIENTO										COORDENADAS					
	KM	TE	SC	TDPA	M	A	B	C2	C3	T3S2	T3S3	T3S2R4	OTROS	A	B	C	K'	D	LATITUD	LONGITUD
T. C. Chihuahua - Madera	0.00	3	0	5695	1.8	79.1	2.7	7.6	1.4	3.8	2.4	1.1	0.1	80.9	2.7	16.4	0.086	0.512	28.354451	-106.261955
Satevo	48.00	1	0	5062	2.2	82.4	2.7	4.0	1.4	3.7	2.3	1.1	0.2	84.6	2.7	12.7	0.079	0.564	27.975607	-106.124350
Valle Zaragoza	120.00	3	0	5719	3.3	81.8	3.6	3.0	2.2	2.5	2.3	0.9	0.4	85.1	3.6	11.3	0.080	0.522	27.440880	-105.806637
Hidalgo del Parral	184.90	1	0	5811	2.5	76.0	2.7	9.2	1.9	3.9	2.9	0.7	0.2	78.5	2.7	18.8	0.100	0.560	26.980844	-105.663764

CHIHUAHUA

9 CARR: Gómez Palacio - Jiménez

CLAVE: 00006

RUTA: MEX-049

AÑO: 2025

LUGAR	ESTACION				CLASIFICACION VEHICULAR EN PORCIENTO										COORDENADAS					
	KM	TE	SC	TDPA	M	A	B	C2	C3	T3S2	T3S3	T3S2R4	OTROS	A	B	C	K'	D	LATITUD	LONGITUD
Gómez Palacio	0.00	3	1	17471	5.9	77.9	2.6	3.3	1.9	4.4	1.5	2.0	0.5	83.8	2.6	13.6	0.091	0.529	25.614826	-103.513588
Gómez Palacio	0.00	3	2	18091	5.7	76.7	2.8	3.5	2.0	4.8	1.6	2.4	0.5	82.4	2.8	14.8	0.078	0.529	25.614911	-103.513785
X. C. Libramiento Norte de Torreón (Cuota)	7.92																			
X. C. La Torreña - Brittingham	10.96	1	1	12092	8.9	64.0	3.8	4.5	2.6	8.5	2.4	4.3	1.0	72.9	3.8	23.3	0.073	0.571	25.632596	-103.520736
X. C. La Torreña - Brittingham	10.96	1	2	12112	8.7	65.4	3.9	4.3	2.7	8.6	2.0	3.6	0.8	74.1	3.9	22.0	0.087	0.571	25.632560	-103.520858
T. Izq. Dinamita	26.27	1	1	7231	5.1	57.7	6.8	4.9	1.8	15.6	3.4	3.6	1.1	62.8	6.8	30.4	0.076	0.575	25.747804	-103.566595
T. Izq. Dinamita	26.27	1	2	7394	5.2	57.8	6.6	5.0	1.7	15.9	3.3	3.5	1.0	63.0	6.6	30.4	0.095	0.575	25.747769	-103.566792
T. C. Gómez Palacio - Corralitos (Cuota)	37.92	1	1	6160	4.2	53.9	6.5	4.8	2.5	18.5	4.0	4.5	1.1	58.1	6.5	35.4	0.066	0.506	25.861681	-103.610332
T. C. Gómez Palacio - Corralitos (Cuota)	37.92	1	2	6325	4.4	53.4	6.5	5.2	2.5	18.7	4.0	4.3	1.0	57.8	6.5	35.7	0.066	0.506	25.861613	-103.610518
Bermejillo	39.30	1	1	3352	13.9	60.0	4.9	5.4	2.5	8.4	2.6	1.9	0.4	73.9	4.9	21.2	0.081	0.537	25.878523	-103.618376
Bermejillo	39.30	1	2	3767	13.7	59.9	4.9	5.1	2.5	8.8	2.6	2.0	0.5	73.6	4.9	21.5	0.088	0.537	25.878490	-103.618460
T. Izq. Ent. La Zarca	40.89	3	0	2471	5.2	42.3	5.5	10.8	4.5	24.1	4.8	1.9	0.9	47.5	5.5	47.0	0.090	0.527	25.902983	-103.628302
Yermo	107.95	1	0	1825	5.2	39.7	4.1	10.9	4.1	24.3	7.8	3.4	0.5	44.9	4.1	51.0	0.063	0.504	26.382677	-103.998054
Yermo	107.95	3	0	1718	5.7	51.8	4.1	9.0	4.1	18.8	4.3	2.1	0.1	57.5	4.1	38.4	0.078	0.500	26.395410	-104.009913
Ceballos	127.20	1	0	1772	3.5	42.7	4.5	5.9	3.4	29.3	7.9	2.4	0.4	46.2	4.5	49.3	0.069	0.516	26.516764	-104.120415
Ceballos	127.20	3	0	1586	6.8	39.5	6.2	7.9	2.2	25.4	7.2	4.3	0.5	46.3	6.2	47.5	0.084	0.541	26.536641	-104.139046
Lim. Edos. Term. Dgo. Ppia. Chih.	146.15																			
Estación Escalón	160.89	3	0	2129	4.6	28.4	5.9	6.4	3.3	39.2	7.9	3.8	0.5	33.0	5.9	61.1	0.072	0.617	26.756205	-104.341458
T. C. Gómez Palacio - Corralitos (Cuota)	168.81																			
Jiménez	223.00	1	1	4422	6.5	44.7	7.5	4.5	2.1	22.7	5.1	5.8	1.1	51.2	7.5	41.3	0.100	0.568	27.117694	-104.890967
Jiménez	223.00	1	2	4351	6.3	45.5	7.6	4.3	1.8	22.8	4.9	5.8	1.0	51.8	7.6	40.6	0.077	0.568	27.117534	-104.890923

10 CARR: Hidalgo del Parral - Guadalupe y Calvo

CLAVE: 00802

RUTA: MEX-024

AÑO: 2025

LUGAR	ESTACION				CLASIFICACION VEHICULAR EN PORCIENTO										COORDENADAS					
	KM	TE	SC	TDPA	M	A	B	C2	C3	T3S2	T3S3	T3S2R4	OTROS	A	B	C	K'	D	LATITUD	LONGITUD
T. C. Hidalgo del Parral - Santa Bárbara	0.00	3	0	3088	3.4	83.0	1.6	2.7	4.1	2.2	1.3	0.9	0.8	86.4	1.6	12.0	0.078	0.515	26.915494	-105.764781
T. Der. Guacho chic	35.00	1	0	1108	3.4	69.4	5.3	7.8	6.3	3.4	2.4	1.4	0.6	72.8	5.3	21.9	0.087	0.625	26.816210	-106.015332
T. Der. Guacho chic	35.00	3	0	908	5.1	72.1	3.0	6.5	4.9	4.9	1.8	0.9	0.8	77.2	3.0	19.8	0.094	0.529	26.810703	-106.015939
Lim. Edos. Term. Chih. Ppia. Dgo	38.00																			
Lim. Edos. Term. Dgo. Ppia. Chih.	57.00																			
El Vergel	110.00	1	0	1040	6.2	75.5	1.8	9.8	3.3	1.7	0.7	0.2	0.8	81.7	1.8	16.5	0.092	0.521	26.523082	-106.357173
Puerto Sabinal	212.00	1	0	886	3.9	74.8	2.2	7.7	5.8	4.0	1.3	0.2	0.1	78.7	2.2	19.1	0.100	0.584	26.451647	-106.386581
Guadalupe y Calvo	234.00																			

CHIHUAHUA

11 CARR: Hidalgo del Parral - Jiménez

CLAVE: 08444

RUTA: MEX-045

AÑO: 2025

LUGAR	ESTACION				CLASIFICACION VEHICULAR EN PORCIENTO													COORDENADAS		
	KM	TE	SC	TDPA	M	A	B	C2	C3	T3S2	T3S3	T3S2R4	OTROS	A	B	C	K'	D	LATITUD	LONGITUD
Hidalgo del Parral	0.00	3	1	4235	2.1	74.2	2.5	13.0	2.8	2.3	1.3	1.3	0.5	76.3	2.5	21.2	0.077	0.515	26.934444	-105.633801
Hidalgo del Parral	0.00	3	2	4312	2.1	74.4	2.6	12.8	3.0	2.1	1.5	1.0	0.5	76.5	2.6	20.9	0.086	0.515	26.934550	-105.633845
Jiménez	76.63	1	1	2667	4.0	71.1	3.3	11.3	1.2	4.8	3.2	1.0	0.1	75.1	3.3	21.6	0.079	0.522	27.138807	-104.947987
Jiménez	76.63	1	2	2610	4.2	71.0	3.2	11.2	1.5	5.1	2.8	0.9	0.1	75.2	3.2	21.6	0.077	0.522	27.138945	-104.948037

12 CARR: Janos - Agua Prieta

CLAVE: 00220

RUTA: MEX-002

AÑO: 2025

LUGAR	ESTACION				CLASIFICACION VEHICULAR EN PORCIENTO													COORDENADAS		
	KM	TE	SC	TDPA	M	A	B	C2	C3	T3S2	T3S3	T3S2R4	OTROS	A	B	C	K'	D	LATITUD	LONGITUD
T. C. Cd. Juárez - Janos	0.00	3	0	4462	5.8	57.4	3.4	8.9	2.2	12.7	3.1	5.6	0.9	63.2	3.4	33.4	0.076	0.540	30.889817	-108.211912
Los Mimbres	56.00	3	0	3669	2.9	53.5	5.7	7.4	3.2	13.8	3.3	9.5	0.7	56.4	5.7	37.9	0.067	0.500	31.244869	-108.581376
Lim. Edos. Term. Chih. Ppia. Son.	78.00																			
Rancho Guadalupe	116.00																			
Agua Prieta	160.00	1	0	2907	6.5	47.2	5.7	6.9	2.0	19.2	4.2	7.5	0.8	53.7	5.7	40.6	0.090	0.508	31.322988	-109.506579

13 CARR: La Junta - Lim. Edos. Term. Chih. Ppia. Son (Yécora)

CLAVE: 00065

RUTA: MEX-016

AÑO: 2025

LUGAR	ESTACION				CLASIFICACION VEHICULAR EN PORCIENTO													COORDENADAS		
	KM	TE	SC	TDPA	M	A	B	C2	C3	T3S2	T3S3	T3S2R4	OTROS	A	B	C	K'	D	LATITUD	LONGITUD
T. C. Chihuahua - Madera	150.00	3	0	2835	1.8	86.7	2.4	4.9	0.7	2.0	1.1	0.3	0.1	88.5	2.4	9.1	0.110	0.563	28.449855	-107.345577
T. Izq. San Juanito	166.30	1	0	3402	2.0	86.7	2.3	4.4	0.8	2.0	1.3	0.4	0.1	88.7	2.3	9.0	0.089	0.520	28.388755	-107.439584
T. Izq. San Juanito	166.30	3	0	1135	4.9	73.8	5.5	10.1	1.1	2.9	1.1	0.5	0.1	78.7	5.5	15.8	0.120	0.743	28.390906	-107.442182
Tomochi	217.40	3	0	1192	1.9	84.0	1.8	6.7	1.5	2.5	1.2	0.3	0.1	85.9	1.8	12.3	0.104	0.806	28.359839	-107.860964
Lim. Edos. Term. Chih. Ppia. Son.	349.00																			

14 CARR: Libramiento de Delicias - Meoqui

CLAVE: 08813

RUTA: MEX-045

AÑO: 2025

LUGAR	ESTACION				CLASIFICACION VEHICULAR EN PORCIENTO													COORDENADAS		
	KM	TE	SC	TDPA	M	A	B	C2	C3	T3S2	T3S3	T3S2R4	OTROS	A	B	C	K'	D	LATITUD	LONGITUD
T. C. Jiménez - Chihuahua (Sur)	136.40	3	1	14873	4.1	72.0	2.8	6.5	1.7	9.2	1.2	1.9	0.6	76.1	2.8	21.1	0.068	0.543	28.190115	-105.452259
T. C. Jiménez - Chihuahua (Sur)	136.40	3	2	13759	4.0	72.4	2.6	6.7	1.5	9.0	1.0	2.0	0.8	76.4	2.6	21.0	0.074	0.543	28.190110	-105.452424
T. Izq. Delicias	141.40	1	1	10849	3.2	69.8	4.4	4.6	2.5	11.2	1.8	2.0	0.5	73.0	4.4	22.6	0.078	0.537	28.225819	-105.458680
T. Izq. Delicias	141.40	1	2	11295	3.0	71.0	4.3	4.8	2.3	11.0	1.6	1.7	0.3	74.0	4.3	21.7	0.084	0.537	28.225779	-105.458857
T. Izq. Delicias	141.40	3	1	14031	2.5	73.8	3.1	5.3	2.1	9.9	1.3	1.5	0.5	76.3	3.1	20.6	0.076	0.563	28.237093	-105.462160
T. Izq. Delicias	141.40	3	2	12464	2.7	73.8	3.2	4.7	2.0	10.1	1.3	1.5	0.7	76.5	3.2	20.3	0.091	0.563	28.237103	-105.462340

CHIHUAHUA

14 CARR: Libramiento de Delicias - Meoqui

CLAVE: 08813

RUTA: MEX-045

AÑO: 2025

LUGAR	ESTACION				CLASIFICACION VEHICULAR EN PORCIENTO													COORDENADAS		
	KM	TE	SC	TDPA	M	A	B	C2	C3	T3S2	T3S3	T3S2R4	OTROS	A	B	C	K'	D	LATITUD	LONGITUD
T. C. Meoqui - Julimes	146.70	3	1	11344	4.0	70.8	4.8	3.1	1.9	11.7	1.5	1.8	0.4	74.8	4.8	20.4	0.096	0.593	28.284661	-105.477883
T. C. Meoqui - Julimes	146.70	3	2	12015	4.2	69.6	5.0	3.4	1.8	12.0	1.6	2.0	0.4	73.8	5.0	21.2	0.086	0.593	28.284548	-105.478002
T. C. Jiménez - Chihuahua (Norte)	150.00	1	1	12770	3.0	66.2	6.0	5.8	2.5	12.1	1.7	2.2	0.5	69.2	6.0	24.8	0.095	0.714	28.290132	-105.488497
T. C. Jiménez - Chihuahua (Norte)	150.00	1	2	12156	2.8	67.4	5.6	5.6	2.3	11.8	1.8	2.0	0.7	70.2	5.6	24.2	0.069	0.714	28.290112	-105.487288

15 CARR: Porvenir - Cd. Juárez

CLAVE: 08169

RUTA: MEX-002

AÑO: 2025

LUGAR	ESTACION				CLASIFICACION VEHICULAR EN PORCIENTO													COORDENADAS		
	KM	TE	SC	TDPA	M	A	B	C2	C3	T3S2	T3S3	T3S2R4	OTROS	A	B	C	K'	D	LATITUD	LONGITUD
Porvenir	0.00																			
T. Der. Puente Porvenir	1.67	3	0	1551	0.7	89.3	3.7	6.0	0.2	0.1	0.0	0.0	0.0	90.0	3.7	6.3	0.094	0.527	31.256268	-105.879562
Guadalupe	30.54	1	0	3005	0.6	90.0	3.4	4.9	0.4	0.7	0.0	0.0	0.0	90.6	3.4	6.0	0.089	0.588	31.387310	-106.093382
San Isidro	55.93	1	0	6387	2.3	80.0	4.8	7.8	1.9	1.6	0.9	0.6	0.1	82.3	4.8	12.9	0.077	0.599	31.541285	-106.272898
Zaragoza	70.32	1	1	30084	1.7	84.2	4.1	6.0	1.5	1.6	0.4	0.3	0.2	85.9	4.1	10.0	0.073	0.505	31.641870	-106.343043
Zaragoza	70.32	1	2	27717	1.9	84.4	3.9	5.8	1.4	1.7	0.2	0.4	0.3	86.3	3.9	9.8	0.076	0.505	31.641758	-106.343105
Cd. Juárez	81.43																			

16 CARR: Ramal a Aeropuerto de Chihuahua

CLAVE: 08421

RUTA: MEX-016

AÑO: 2025

LUGAR	ESTACION				CLASIFICACION VEHICULAR EN PORCIENTO													COORDENADAS		
	KM	TE	SC	TDPA	M	A	B	C2	C3	T3S2	T3S3	T3S2R4	OTROS	A	B	C	K'	D	LATITUD	LONGITUD
T. C. Chihuahua - Ojinaga	0.00	3	1	16734	3.0	92.3	1.5	1.2	0.8	0.5	0.1	0.5	0.1	95.3	1.5	3.2	0.078	0.553	28.678942	-105.994401
T. C. Chihuahua - Ojinaga	0.00	3	2	17064	2.7	91.4	1.6	1.4	1.2	0.6	0.2	0.7	0.2	94.1	1.6	4.3	0.090	0.553	28.678789	-105.994658
Aeropuerto	5.00																			

17 CARR: Ramal a Palomas

CLAVE: 08019

RUTA: MEX-002

AÑO: 2025

LUGAR	ESTACION				CLASIFICACION VEHICULAR EN PORCIENTO													COORDENADAS		
	KM	TE	SC	TDPA	M	A	B	C2	C3	T3S2	T3S3	T3S2R4	OTROS	A	B	C	K'	D	LATITUD	LONGITUD
T. C. Cd. Juárez - Janos	0.00	3	0	2003	2.4	83.0	1.7	7.8	0.7	3.6	0.5	0.2	0.1	85.4	1.7	12.9	0.095	0.565	31.476916	-107.614506
T. Izq. Guadalupe Victoria	4.50	3	0	1721	2.5	84.1	1.0	7.5	0.9	3.2	0.6	0.1	0.1	86.6	1.0	12.4	0.096	0.663	31.518809	-107.613266
Palomas	34.10																			

CHIHUAHUA

18 CARR: San Jerónimo - Santa Teresa

CLAVE: 08043

RUTA: MEX-002

AÑO: 2025

LUGAR	ESTACION				CLASIFICACION VEHICULAR EN PORCIENTO														COORDENADAS	
	KM	TE	SC	TDPA	M	A	B	C2	C3	T3S2	T3S3	T3S2R4	OTROS	A	B	C	K'	D	LATITUD	LONGITUD
X. C. Cd. Juárez - Janos	0.00	3	0	3655	2.0	63.6	6.4	10.8	3.1	12.3	1.3	0.4	0.1	65.6	6.4	28.0	0.091	0.733	31.614304	-106.684637
El Mirador	20.00																			

19 CARR: Villa Ahumada - Cd. Juárez (Libre)

CLAVE: 08420

RUTA: MEX-045

AÑO: 2025

LUGAR	ESTACION				CLASIFICACION VEHICULAR EN PORCIENTO														COORDENADAS	
	KM	TE	SC	TDPA	M	A	B	C2	C3	T3S2	T3S3	T3S2R4	OTROS	A	B	C	K'	D	LATITUD	LONGITUD
Villa Ahumada	237.00	3	1	6216	1.9	72.2	4.6	3.1	1.2	12.9	1.4	2.1	0.6	74.1	4.6	21.3	0.074	0.546	30.634455	-106.514223
Villa Ahumada	237.00	3	2	6656	2.2	72.2	4.3	3.4	1.6	12.6	1.3	2.0	0.4	74.4	4.3	21.3	0.075	0.546	30.634906	-106.514520
Samalayuca	320.30	3	1	7043	2.8	75.0	3.1	3.3	1.3	11.2	1.3	1.5	0.5	77.8	3.1	19.1	0.103	0.576	31.372871	-106.466347
Samalayuca	320.30	3	2	7075	2.4	76.3	3.0	3.1	0.9	11.0	1.5	1.3	0.5	78.7	3.0	18.3	0.093	0.576	31.372764	-106.466906
T. Izq. Janos	350.00	1	1	11629	1.4	76.9	2.3	6.0	3.1	8.1	0.9	1.1	0.2	78.3	2.3	19.4	0.099	0.500	31.600924	-106.454540
T. Izq. Janos	350.00	1	2	11825	1.5	77.0	2.5	6.2	2.8	8.0	1.0	0.8	0.2	78.5	2.5	19.0	0.082	0.500	31.601199	-106.454564
T. Der. Antiguo Aeropuerto	353.60	1	1	24026	4.0	83.3	2.6	4.8	1.2	1.8	1.0	0.7	0.6	87.3	2.6	10.1	0.092	0.607	31.634381	-106.439307
T. Der. Antiguo Aeropuerto	353.60	1	2	23307	4.3	82.7	2.8	5.0	1.0	2.0	0.8	0.9	0.5	87.0	2.8	10.2	0.077	0.607	31.634450	-106.439559
Cd. Juárez	371.25																			

20 CARR: Camargo - Delicias (Cuota)

CLAVE: 08418

RUTA: MEX-045D

AÑO: 2025

LUGAR	ESTACION				CLASIFICACION VEHICULAR EN PORCIENTO														COORDENADAS	
	KM	TE	SC	TDPA	M	A	B	C2	C3	T3S2	T3S3	T3S2R4	OTROS	A	B	C	K'	D	LATITUD	LONGITUD
Camargo	68.98																			
T. C. Ent. Ciudad Camargo - Saucillo	72.00	1	1	7434	4.2	63.7	5.2	4.8	2.0	13.6	2.4	3.2	0.9	67.9	5.2	26.9	0.065	0.515	27.716302	-105.191152
T. C. Ent. Ciudad Camargo - Saucillo	72.00	1	2	6549	4.0	64.6	5.3	5.0	1.8	13.3	2.5	2.8	0.7	68.6	5.3	26.1	0.070	0.515	27.716235	-105.191234
T. C. Ent. Ciudad Camargo - Saucillo	72.00	3	1	4277	3.8	54.0	7.2	4.5	1.5	20.3	2.6	5.3	0.8	57.8	7.2	35.0	0.074	0.545	27.724228	-105.196231
T. C. Ent. Ciudad Camargo - Saucillo	72.00	3	2	4225	4.0	53.5	7.4	4.8	1.4	19.9	2.4	5.5	1.1	57.5	7.4	35.1	0.067	0.545	27.723748	-105.195776
Plaza de Cobro Altavista	73.20	2	1	3639	0.2	52.2	2.7	5.6	3.2	24.8	2.9	5.9	2.5	52.4	2.7	44.9	0.088	0.500	27.730871	-105.197567
Plaza de Cobro Altavista	73.20	2	2	3639	0.2	52.2	2.7	5.6	3.2	24.8	2.9	5.9	2.5	52.4	2.7	44.9	0.088	0.500	27.730871	-105.197567
Estación Conchos	104.30	3	1	4631	3.0	57.5	5.9	4.6	1.8	18.8	2.9	4.8	0.7	60.5	5.9	33.6	0.082	0.652	27.980594	-105.293696
Estación Conchos	104.30	3	2	4865	3.2	57.5	5.8	4.8	2.0	18.7	2.8	4.4	0.8	60.7	5.8	33.5	0.067	0.652	27.980537	-105.293819
Saucillo	113.50	3	1	5822	3.9	47.5	7.0	10.1	2.0	20.8	2.7	4.6	1.4	51.4	7.0	41.6	0.071	0.570	28.036009	-105.325058
Saucillo	113.50	3	2	5942	4.2	48.3	6.9	9.8	1.9	21.0	2.3	4.4	1.2	52.5	6.9	40.6	0.070	0.570	28.035975	-105.325185
Plaza de Cobro Saucillo	116.30	2	1	4681	0.2	58.5	2.3	4.9	2.8	22.0	2.4	4.7	2.2	58.7	2.3	39.0	0.088	0.500	28.046417	-105.329309
Plaza de Cobro Saucillo	116.30	2	2	4681	0.2	58.5	2.3	4.9	2.8	22.0	2.4	4.7	2.2	58.7	2.3	39.0	0.088	0.500	28.046417	-105.329309
Delicias	138.00	1	1	10019	2.6	67.7	4.2	8.4	1.5	9.7	2.8	2.4	0.7	70.3	4.2	25.5	0.077	0.574	28.171338	-105.441200

CHIHUAHUA

20 CARR: Camargo - Delicias (Cuota)

CLAVE: 08418

RUTA: MEX-045D

AÑO: 2025

LUGAR	ESTACION				CLASIFICACION VEHICULAR EN PORCIENTO														COORDENADAS	
	KM	TE	SC	TDPA	M	A	B	C2	C3	T3S2	T3S3	T3S2R4	OTROS	A	B	C	K'	D	LATITUD	LONGITUD
Delicias	138.00	1	2	9411	2.8	67.6	4.4	8.4	1.7	9.6	2.7	2.3	0.5	70.4	4.4	25.2	0.077	0.574	28.171365	-105.441361

21 CARR: Chihuahua - Sacramento (Cuota)

CLAVE: 08015

RUTA: MEX-045D

AÑO: 2025

LUGAR	ESTACION				CLASIFICACION VEHICULAR EN PORCIENTO														COORDENADAS	
	KM	TE	SC	TDPA	M	A	B	C2	C3	T3S2	T3S3	T3S2R4	OTROS	A	B	C	K'	D	LATITUD	LONGITUD
T. C. Chihuahua - El Sueco	18.12	3	1	12376	1.7	83.3	3.2	4.0	2.1	4.5	0.5	0.6	0.1	85.0	3.2	11.8	0.082	0.532	28.770275	-106.170754
T. C. Chihuahua - El Sueco	18.12	3	2	11624	2.0	82.8	3.4	3.8	1.9	4.5	0.6	0.7	0.3	84.8	3.4	11.8	0.100	0.532	28.770258	-106.170930
Francisco Villa	20.00	3	1	14337	2.5	81.5	3.1	3.6	2.0	5.9	0.5	0.6	0.3	84.0	3.1	12.9	0.085	0.568	28.783252	-106.173279
Francisco Villa	20.00	3	2	13720	2.5	82.4	2.7	3.8	1.7	5.7	0.6	0.4	0.2	84.9	2.7	12.4	0.077	0.568	28.783237	-106.173448
T. C. Libramiento Oriente Chihuahua (Cuota)	21.17	3	1	9899	1.8	75.3	3.5	4.3	1.9	9.5	1.1	2.1	0.5	77.1	3.5	19.4	0.087	0.613	28.805490	-106.177592
T. C. Libramiento Oriente Chihuahua (Cuota)	21.17	3	2	8667	2.0	74.0	3.8	4.5	2.1	9.3	1.4	2.2	0.7	76.0	3.8	20.2	0.093	0.613	28.805478	-106.177759
T. C. (Chihuahua - El Sueco)	31.30																			

22 CARR: El Sueco - Villa Ahumada (Cuota)

CLAVE: 08420

RUTA: MEX-045D

AÑO: 2025

LUGAR	ESTACION				CLASIFICACION VEHICULAR EN PORCIENTO														COORDENADAS	
	KM	TE	SC	TDPA	M	A	B	C2	C3	T3S2	T3S3	T3S2R4	OTROS	A	B	C	K'	D	LATITUD	LONGITUD
Ent. El Sueco	0.00	3	1	5296	2.8	63.1	3.4	5.2	1.3	18.2	2.0	3.1	0.9	65.9	3.4	30.7	0.074	0.519	29.895417	-106.395446
Ent. El Sueco	0.00	3	2	4886	3.0	63.4	3.6	5.0	1.5	18.0	1.8	2.6	1.1	66.4	3.6	30.0	0.076	0.519	29.895633	-106.395911
Plaza de Cobro Villa Ahumada	82.00	2	1	4046	0.2	67.3	1.8	3.5	2.2	19.3	1.3	2.7	1.7	67.5	1.8	30.7	0.103	0.500	30.437059	-106.521897
Plaza de Cobro Villa Ahumada	82.00	2	2	4046	0.2	67.3	1.8	3.5	2.2	19.3	1.3	2.7	1.7	67.5	1.8	30.7	0.103	0.500	30.437059	-106.521897
Villa Ahumada	83.63																			

23 CARR: Gómez Palacio - Corralitos (Cuota)

CLAVE: 00016

RUTA: MEX-049D

AÑO: 2025

LUGAR	ESTACION				CLASIFICACION VEHICULAR EN PORCIENTO														COORDENADAS	
	KM	TE	SC	TDPA	M	A	B	C2	C3	T3S2	T3S3	T3S2R4	OTROS	A	B	C	K'	D	LATITUD	LONGITUD
T. C. Gómez Palacio - Jiménez (Libre)	38.00																			
T. Izq. Bermejillo	40.10	1	1	2798	2.5	44.7	6.1	5.1	2.5	26.6	5.0	6.7	0.8	47.2	6.1	46.7	0.074	0.506	25.879257	-103.611939
T. Izq. Bermejillo	40.10	1	2	3035	2.1	39.5	7.2	5.4	2.4	29.2	5.4	7.8	1.0	41.6	7.2	51.2	0.069	0.506	25.879289	-103.612096
T. Izq. Bermejillo	40.10	3	1	3018	3.3	39.9	9.0	4.8	2.4	26.5	5.3	7.8	1.0	43.2	9.0	47.8	0.068	0.560	25.898619	-103.612598
T. Izq. Bermejillo	40.10	3	2	3543	3.4	39.8	9.3	5.3	2.2	26.4	5.2	7.4	1.0	43.2	9.3	47.5	0.065	0.560	25.898554	-103.612851
Plaza de Cobro Bermejillo	44.16	2	1	2768	0.2	34.5	8.6	2.6	1.8	33.8	6.9	8.0	3.6	34.7	8.6	56.7	0.079	0.500	25.923705	-103.622079
Plaza de Cobro Bermejillo	44.16	2	2	2768	0.2	34.5	8.6	2.6	1.8	33.8	6.9	8.0	3.6	34.7	8.6	56.7	0.079	0.500	25.923705	-103.622079

CHIHUAHUA

23 CARR: Gómez Palacio - Corralitos (Cuota)

CLAVE: 00016

RUTA: MEX-049D

AÑO: 2025

LUGAR	ESTACION				CLASIFICACION VEHICULAR EN PORCIENTO										COORDENADAS					
	KM	TE	SC	TDPA	M	A	B	C2	C3	T3S2	T3S3	T3S2R4	OTROS	A	B	C	K'	D	LATITUD	LONGITUD
T. Izq. Ceballos	123.80	1	1	2916	4.8	35.1	9.4	4.5	2.1	31.3	5.1	6.8	0.9	39.9	9.4	50.7	0.073	0.552	26.561188	-104.037666
T. Izq. Ceballos	123.80	1	2	2954	4.1	29.6	10.6	5.3	2.1	34.7	5.9	6.7	1.0	33.7	10.6	55.7	0.072	0.552	26.561081	-104.038081
Plaza de Cobro Ceballos	128.80	2	1	2825	0.2	37.3	4.3	2.8	5.1	31.7	7.2	7.5	3.9	37.5	4.3	58.2	0.079	0.500	26.586801	-104.057535
Plaza de Cobro Ceballos	128.80	2	2	2825	0.2	37.3	4.3	2.8	5.1	31.7	7.2	7.5	3.9	37.5	4.3	58.2	0.079	0.500	26.586801	-104.057535
Lim. Edos. Term. Dgo. Ppia. Chih.	158.00																			
T. C. Gómez Palacio - Jiménez	188.46	1	1	2873	3.5	34.6	10.8	6.5	1.9	29.3	6.2	6.0	1.2	38.1	10.8	51.1	0.080	0.519	26.902426	-104.549606
T. C. Gómez Palacio - Jiménez	188.46	1	2	3014	3.6	34.1	10.7	6.7	2.2	29.4	6.3	5.9	1.1	37.7	10.7	51.6	0.070	0.519	26.901770	-104.550447
T. C. Gómez Palacio - Jiménez	188.46	3	1	3120	7.0	32.8	10.1	6.4	1.9	28.3	6.1	6.2	1.2	39.8	10.1	50.1	0.079	0.510	26.914925	-104.572530
T. C. Gómez Palacio - Jiménez	188.46	3	2	3224	6.9	32.7	10.3	6.5	2.0	28.3	5.8	6.4	1.1	39.6	10.3	50.1	0.071	0.510	26.914160	-104.573123
T. C. Gómez Palacio - Jiménez (Libre)	226.50	1	1	3865	2.8	32.9	10.1	7.0	2.0	30.8	5.7	7.6	1.1	35.7	10.1	54.2	0.064	0.549	27.101515	-104.868884
T. C. Gómez Palacio - Jiménez (Libre)	226.50	1	2	3897	3.0	32.7	10.3	6.8	2.0	30.7	5.8	7.7	1.0	35.7	10.3	54.0	0.055	0.549	27.101495	-104.869117

24 CARR: Jiménez - Camargo (Cuota)

CLAVE: 08418

RUTA: MEX-045D

AÑO: 2025

LUGAR	ESTACION				CLASIFICACION VEHICULAR EN PORCIENTO										COORDENADAS					
	KM	TE	SC	TDPA	M	A	B	C2	C3	T3S2	T3S3	T3S2R4	OTROS	A	B	C	K'	D	LATITUD	LONGITUD
Jiménez	0.00	3	1	3555	4.2	42.2	7.9	4.6	1.8	28.3	4.2	5.8	1.0	46.4	7.9	45.7	0.070	0.514	27.151879	-104.930194
Jiménez	0.00	3	2	4096	4.5	42.4	8.1	4.6	1.8	27.9	4.0	5.7	1.0	46.9	8.1	45.0	0.064	0.514	27.151909	-104.930316
T. Izq. Providencia	2.20	3	1	3653	2.5	43.5	8.1	4.2	2.0	28.7	4.2	5.7	1.1	46.0	8.1	45.9	0.070	0.515	27.159421	-104.930428
T. Izq. Providencia	2.20	3	2	3418	2.7	42.5	8.5	4.4	2.2	28.9	4.1	5.7	1.0	45.2	8.5	46.3	0.068	0.515	27.159613	-104.930587
Plaza de Cobro Camargo	11.00	2	1	3153	0.2	42.3	4.5	4.9	2.9	31.9	3.5	6.9	2.9	42.5	4.5	53.0	0.085	0.500	27.244960	-104.933154
Plaza de Cobro Camargo	11.00	2	2	3153	0.2	42.3	4.5	4.9	2.9	31.9	3.5	6.9	2.9	42.5	4.5	53.0	0.085	0.500	27.244960	-104.933154
Camargo	68.98	1	1	3881	5.3	48.4	7.6	4.6	2.7	22.4	3.0	4.9	1.1	53.7	7.6	38.7	0.068	0.516	27.624822	-105.118530
Camargo	68.98	1	2	4043	5.1	47.4	7.7	4.9	3.0	22.7	2.9	5.4	0.9	52.5	7.7	39.8	0.063	0.516	27.624585	-105.118879

25 CARR: Libramiento Oriente Chihuahua (Cuota)

CLAVE:

RUTA: MEX-045D

AÑO: 2025

LUGAR	ESTACION				CLASIFICACION VEHICULAR EN PORCIENTO										COORDENADAS					
	KM	TE	SC	TDPA	M	A	B	C2	C3	T3S2	T3S3	T3S2R4	OTROS	A	B	C	K'	D	LATITUD	LONGITUD
T. C. Delicias - Chihuahua	0.00	3	0	5593	5.3	45.5	6.2	5.2	2.5	24.7	3.0	6.4	1.2	50.8	6.2	43.0	0.064	0.614	28.586068	-105.951480
Plaza de Cobro Jiménez	3.00	2	0	3865	0.2	43.1	2.2	3.7	2.7	33.3	4.3	7.6	2.9	43.3	2.2	54.5	0.090	0.500	28.603444	-105.951440
T. C. Chihuahua - Ojinaga	22.00	1	0	7757	3.7	65.4	4.1	5.7	2.2	11.4	2.6	3.9	1.0	69.1	4.1	26.8	0.068	0.609	28.736911	-105.980889
T. C. Chihuahua - Ojinaga	22.00	3	0	6748	4.9	59.5	6.6	4.2	1.7	14.9	2.6	4.6	1.0	64.4	6.6	29.0	0.066	0.526	28.742395	-105.992863
Plaza de Cobro Sacramento	38.30	2	0	4888	0.4	50.6	1.9	3.6	2.8	27.7	3.9	6.3	2.8	51.0	1.9	47.1	0.090	0.500	28.790516	-106.139354
T. C. Chihuahua - Sacramento (Cuota)	42.20																			

CHIHUAHUA

26 CARR: Libramiento Sur de Cd. Juárez (Cuota)

CLAVE:

RUTA: MEX-045D

AÑO: 2025

LUGAR	ESTACION				CLASIFICACION VEHICULAR EN PORCIENTO										COORDENADAS					
	KM	TE	SC	TDPA	M	A	B	C2	C3	T3S2	T3S3	T3S2R4	OTROS	A	B	C	K'	D	LATITUD	LONGITUD
T. C. Villa Ahumada - Cd. Juárez	0.00	3	0	1585	2.6	81.1	0.4	6.7	1.9	5.9	0.9	0.4	0.1	83.7	0.4	15.9	0.105	0.521	31.446156	-106.448386
T. C. Porvenir - Cd. Juárez	31.10																			

27 CARR: Ahumada - Ricardo Flores Magón

CLAVE: 08804

RUTA: CHIH

AÑO: 2025

LUGAR	ESTACION				CLASIFICACION VEHICULAR EN PORCIENTO										COORDENADAS					
	KM	TE	SC	TDPA	M	A	B	C2	C3	T3S2	T3S3	T3S2R4	OTROS	A	B	C	K'	D	LATITUD	LONGITUD
Ahumada	0.00	3	0	2046	1.2	70.6	1.1	15.3	1.3	7.8	2.0	0.7	0.0	71.8	1.1	27.1	0.085	0.684	30.616014	-106.528698
Ricardo Flores Magón	96.00	1	0	2299	3.0	78.1	2.7	6.5	1.2	6.7	1.0	0.8	0.0	81.1	2.7	16.2	0.094	0.558	29.958391	-106.951940

28 CARR: Camargo - Jiménez

CLAVE: 08021

RUTA: CHIH-049

AÑO: 2025

LUGAR	ESTACION				CLASIFICACION VEHICULAR EN PORCIENTO										COORDENADAS					
	KM	TE	SC	TDPA	M	A	B	C2	C3	T3S2	T3S3	T3S2R4	OTROS	A	B	C	K'	D	LATITUD	LONGITUD
T. C. Jiménez - Chihuahua (Cuota)	0.00	3	0	2348	2.5	77.4	2.1	7.7	2.6	5.1	2.0	0.6	0.0	79.9	2.1	18.0	0.075	0.589	27.678779	-105.140179
T. Izq. Ojinaga	9.60	1	0	1876	1.6	77.1	4.0	5.8	2.4	6.3	2.2	0.6	0.0	78.7	4.0	17.3	0.084	0.522	27.650486	-105.081269
Jiménez	77.00	1	0	2399	4.1	77.7	2.7	4.2	2.6	4.9	2.5	1.2	0.1	81.8	2.7	15.5	0.084	0.584	27.156986	-104.888426

29 CARR: Cuauhtémoc - Buenaventura

CLAVE: 08015

RUTA: CHIH

AÑO: 2025

LUGAR	ESTACION				CLASIFICACION VEHICULAR EN PORCIENTO										COORDENADAS					
	KM	TE	SC	TDPA	M	A	B	C2	C3	T3S2	T3S3	T3S2R4	OTROS	A	B	C	K'	D	LATITUD	LONGITUD
T. C. Chihuahua - Madera	0.00	3	1	14237	3.1	80.6	1.6	9.9	1.4	1.4	0.9	0.6	0.5	83.7	1.6	14.7	0.087	0.608	28.406467	-106.895742
T. C. Chihuahua - Madera	0.00	3	2	15026	3.1	80.4	1.7	10.0	1.5	1.3	0.8	0.7	0.5	83.5	1.7	14.8	0.094	0.608	28.406448	-106.895940
Álvaro Obregón	42.00	3	1	4109	2.0	85.0	1.8	3.7	2.0	3.7	1.1	0.5	0.2	87.0	1.8	11.2	0.086	0.539	28.752791	-106.918107
Álvaro Obregón	42.00	3	2	3935	2.1	84.4	1.7	4.0	1.8	3.6	1.5	0.6	0.3	86.5	1.7	11.8	0.080	0.539	28.752640	-106.918130
Bachiniva	77.50	1	0	3502	3.1	87.1	1.7	4.7	1.4	1.2	0.3	0.4	0.1	90.2	1.7	8.1	0.087	0.513	28.772034	-107.249179
T. Der. Namiquipa	112.06	3	0	4258	2.9	86.5	0.9	6.7	1.0	1.0	0.7	0.2	0.1	89.4	0.9	9.7	0.096	0.587	29.026855	-107.451719
T. Izq. Madera	150.50	3	0	1689	1.6	87.6	1.8	5.9	1.2	0.9	0.8	0.1	0.1	89.2	1.8	9.0	0.083	0.525	29.268258	-107.709241
Buenaventura	253.30	1	0	743	5.4	87.6	1.4	2.8	0.8	1.0	0.9	0.1	0.0	93.0	1.4	5.6	0.108	0.588	29.841078	-107.481007

CHIHUAHUA

30 CARR: Delicias - Saucillo

CLAVE: 08007

RUTA: CHIH-007

AÑO: 2025

LUGAR	ESTACION				CLASIFICACION VEHICULAR EN PORCIENTO										COORDENADAS					
	KM	TE	SC	TDPA	M	A	B	C2	C3	T3S2	T3S3	T3S2R4	OTROS	A	B	C	K'	D	LATITUD	LONGITUD
Delicias	0.00	3	0	6890	14.3	77.4	1.1	4.4	1.6	0.7	0.3	0.2	0.0	91.7	1.1	7.2	0.078	0.540	28.194994	-105.425718
Las Varas	17.00	1	0	2491	9.7	76.6	1.6	10.7	0.9	0.4	0.1	0.0	0.0	86.3	1.6	12.1	0.090	0.576	28.164901	-105.341068
Saucillo	33.00	1	0	6019	6.0	84.1	1.5	4.7	1.5	1.0	0.8	0.4	0.0	90.1	1.5	8.4	0.077	0.563	28.046504	-105.300044

31 CARR: Ent. Peña Blanca - Ent. La Concha

CLAVE: 08493

RUTA: CHIH

AÑO: 2025

LUGAR	ESTACION				CLASIFICACION VEHICULAR EN PORCIENTO										COORDENADAS					
	KM	TE	SC	TDPA	M	A	B	C2	C3	T3S2	T3S3	T3S2R4	OTROS	A	B	C	K'	D	LATITUD	LONGITUD
T. C. Cuauhtémoc - Buenaventura	0.00	3	0	853	1.3	87.9	0.9	6.4	1.8	0.7	0.9	0.1	0.0	89.2	0.9	9.9	0.100	0.600	29.262779	-107.710821
T. C. Chihuahua - Madera	17.00	1	0	381	2.0	80.4	1.6	3.7	0.9	3.9	6.7	0.8	0.0	82.4	1.6	16.0	0.113	0.605	29.122067	-107.905882

32 CARR: Ent. Puerto Justo - Ent. Guacho chic

CLAVE: 08044

RUTA: CHIH

AÑO: 2025

LUGAR	ESTACION				CLASIFICACION VEHICULAR EN PORCIENTO										COORDENADAS					
	KM	TE	SC	TDPA	M	A	B	C2	C3	T3S2	T3S3	T3S2R4	OTROS	A	B	C	K'	D	LATITUD	LONGITUD
T. C. Hidalgo del Parral - Pto. Sabinal	0.00	3	0	140	6.1	78.2	3.5	6.8	3.5	0.7	0.4	0.8	0.0	84.3	3.5	12.2	0.136	0.526	26.813464	-106.016692
Guacho chic	130.00																			

33 CARR: Lázaro Cárdenas - Ent. Colonia San José

CLAVE: 08004

RUTA: CHIH-004

AÑO: 2025

LUGAR	ESTACION				CLASIFICACION VEHICULAR EN PORCIENTO										COORDENADAS					
	KM	TE	SC	TDPA	M	A	B	C2	C3	T3S2	T3S3	T3S2R4	OTROS	A	B	C	K'	D	LATITUD	LONGITUD
T. C. Jiménez - Chihuahua	0.00	3	1	3404	13.0	78.4	1.9	3.8	1.3	0.6	0.5	0.4	0.1	91.4	1.9	6.7	0.086	0.507	28.387441	-105.628678
T. C. Jiménez - Chihuahua	0.00	3	2	3440	13.2	78.2	1.4	3.9	1.4	0.5	0.7	0.6	0.1	91.4	1.4	7.2	0.082	0.507	28.387551	-105.628628
T. C. Meoqui - Julimes	18.90	1	0	1839	6.5	84.0	2.1	4.7	1.4	0.7	0.3	0.2	0.1	90.5	2.1	7.4	0.085	0.532	28.387732	-105.449758

34 CARR: Libramiento de Hidalgo del Parral

CLAVE: 08221

RUTA: CHIH

AÑO: 2025

LUGAR	ESTACION				CLASIFICACION VEHICULAR EN PORCIENTO										COORDENADAS					
	KM	TE	SC	TDPA	M	A	B	C2	C3	T3S2	T3S3	T3S2R4	OTROS	A	B	C	K'	D	LATITUD	LONGITUD
T. C. Hidalgo del Parral - Santa Bárbara	0.00																			
T. C. Ent. La Zarca - Hidalgo del Parral	8.00	3	1	5501	7.6	85.7	1.1	1.9	1.1	1.1	0.9	0.5	0.1	93.3	1.1	5.6	0.074	0.594	26.923346	-105.643441
T. C. Ent. La Zarca - Hidalgo del Parral	8.00	3	2	5948	7.3	86.0	1.2	1.7	1.2	1.1	0.8	0.6	0.1	93.3	1.2	5.5	0.085	0.594	26.923433	-105.643517
T. C. Hidalgo del Parral - Jiménez	10.00																			

CHIHUAHUA

35 CARR: Libramiento de Jiménez

CLAVE: 08047

RUTA: CHIH

AÑO: 2025

LUGAR	ESTACION				CLASIFICACION VEHICULAR EN PORCIENTO													COORDENADAS		
	KM	TE	SC	TDPA	M	A	B	C2	C3	T3S2	T3S3	T3S2R4	OTROS	A	B	C	K'	D	LATITUD	LONGITUD
T. C. Gómez Palacio - Jiménez	0.00	3	1	6401	10.0	52.0	5.2	8.5	3.2	11.5	3.2	5.3	1.1	62.0	5.2	32.8	0.059	0.524	27.133751	-104.909564
T. C. Gómez Palacio - Jiménez	0.00	3	2	6126	10.2	51.5	5.3	8.6	3.4	11.4	3.2	5.5	0.9	61.7	5.3	33.0	0.063	0.524	27.133666	-104.909692
T. C. Jiménez - Chihuahua (Cuota)	3.40	1	1	4983	4.3	59.3	8.5	6.3	1.9	14.3	2.5	2.2	0.7	63.6	8.5	27.9	0.068	0.521	27.141256	-104.921832
T. C. Jiménez - Chihuahua (Cuota)	3.40	1	2	4970	4.2	59.2	8.4	6.5	1.8	14.4	2.4	2.4	0.7	63.4	8.4	28.2	0.071	0.521	27.141138	-104.921777

36 CARR: Meoqui - Julimes

CLAVE: 08005

RUTA: CHIH-005

AÑO: 2025

LUGAR	ESTACION				CLASIFICACION VEHICULAR EN PORCIENTO													COORDENADAS		
	KM	TE	SC	TDPA	M	A	B	C2	C3	T3S2	T3S3	T3S2R4	OTROS	A	B	C	K'	D	LATITUD	LONGITUD
Meoqui	0.00	3	0	6756	5.2	83.9	0.8	7.1	1.2	0.6	0.4	0.4	0.4	89.1	0.8	10.1	0.079	0.553	28.284468	-105.462530
Loreto	8.00	3	0	3989	10.6	80.6	1.6	3.0	1.7	1.0	0.3	1.1	0.1	91.2	1.6	7.2	0.083	0.505	28.322848	-105.433193
Regina	15.40	3	0	4450	5.2	77.1	1.6	14.2	1.0	0.5	0.1	0.2	0.1	82.3	1.6	16.1	0.099	0.743	28.421289	-105.454315
Julimes	23.00	1	0	3509	5.3	83.8	3.2	4.3	1.6	1.4	0.2	0.1	0.1	89.1	3.2	7.7	0.085	0.528	28.427484	-105.441090

37 CARR: Ramal a San Pedro Creel

CLAVE: 08812

RUTA: CHIH-025

AÑO: 2025

LUGAR	ESTACION				CLASIFICACION VEHICULAR EN PORCIENTO													COORDENADAS		
	KM	TE	SC	TDPA	M	A	B	C2	C3	T3S2	T3S3	T3S2R4	OTROS	A	B	C	K'	D	LATITUD	LONGITUD
T. C. La Junta - Yepachi	0.00	3	0	1916	1.8	87.9	2.8	3.9	0.7	1.6	1.1	0.2	0.0	89.7	2.8	7.5	0.127	0.758	28.385212	-107.441755
San Juanito	58.00	3	0	2285	3.7	86.1	2.4	3.8	1.9	1.3	0.5	0.2	0.1	89.8	2.4	7.8	0.109	0.622	27.960370	-107.606958
San Pedro Creel	85.00	1	0	2281	3.7	86.1	2.5	4.9	1.0	1.3	0.5	0.0	0.0	89.8	2.5	7.7	0.096	0.619	27.768092	-107.638120

38 CARR: Samachique - Batopilas

CLAVE:

RUTA: CHIH

AÑO: 2025

LUGAR	ESTACION				CLASIFICACION VEHICULAR EN PORCIENTO													COORDENADAS		
	KM	TE	SC	TDPA	M	A	B	C2	C3	T3S2	T3S3	T3S2R4	OTROS	A	B	C	K'	D	LATITUD	LONGITUD
Samachique	0.00	3	0	151	7.9	75.8	1.7	12.0	1.5	0.4	0.5	0.2	0.0	83.7	1.7	14.6	0.146	0.545	27.286861	-107.530472
Batopilas	61.00																			

39 CARR: San Juanito - Ent. Basaseachi

CLAVE: 08045

RUTA: CHIH

AÑO: 2025

LUGAR	ESTACION				CLASIFICACION VEHICULAR EN PORCIENTO													COORDENADAS		
	KM	TE	SC	TDPA	M	A	B	C2	C3	T3S2	T3S3	T3S2R4	OTROS	A	B	C	K'	D	LATITUD	LONGITUD
San Juanito	0.00	3	0	763	3.0	84.9	0.7	6.6	3.8	0.6	0.2	0.2	0.0	87.9	0.7	11.4	0.134	0.676	27.972428	-107.616673
T. C. La Junta - Yécora	84.00	1	0	653	2.6	91.2	0.8	2.7	1.8	0.6	0.2	0.1	0.0	93.8	0.8	5.4	0.159	0.625	28.189449	-108.172556

CHIHUAHUA

40 CARR: San Pedro Creel - Guachochi

CLAVE:

RUTA: CHIH-025

AÑO: 2025

LUGAR	ESTACION	CLASIFICACION VEHICULAR EN PORCIENTO												COORDENADAS								
		KM	TE	SC	TDPA	M	A	B	C2	C3	T3S2	T3S3	T3S2R4	OTROS	A	B	C	K'	D	LATITUD	LONGITUD	
San Pedro Creel	90.30																					
Samachique	164.30	1	0	172	3.2	83.0	1.7	8.3	1.8	1.2	0.5	0.3	0.0	86.2	1.7	12.1	0.145	0.600	27.298850	-107.526721		
Samachique	164.30	3	0	232	3.5	73.2	1.8	18.3	2.0	0.9	0.3	0.0	0.0	76.7	1.8	21.5	0.125	0.655	27.296146	-107.523442		
Guachochi	246.00																					

41 CARR: T. C. (Camargo - Jiménez) - Ojinaga

CLAVE: 08009

RUTA: CHIH-018

AÑO: 2025

LUGAR	ESTACION	CLASIFICACION VEHICULAR EN PORCIENTO												COORDENADAS						
		KM	TE	SC	TDPA	M	A	B	C2	C3	T3S2	T3S3	T3S2R4	OTROS	A	B	C	K'	D	LATITUD
T. C. Camargo - Jiménez	0.00	3	1	436	2.9	75.3	1.5	6.6	1.0	6.0	3.3	3.1	0.3	78.2	1.5	20.3	0.092	0.728	27.658150	-105.059121
T. C. Camargo - Jiménez	0.00	3	2	424	2.4	76.3	1.4	6.1	1.5	5.7	3.0	3.1	0.5	78.7	1.4	19.9	0.139	0.728	27.658170	-105.059138
T. Der. La Perla	97.00	3	0	620	0.7	63.9	2.4	14.1	1.6	8.6	5.4	3.0	0.3	64.6	2.4	33.0	0.079	0.755	28.307743	-104.573182
T. Der. Majjoma	174.20	3	0	511	1.3	75.5	1.6	15.9	1.0	3.1	1.2	0.4	0.0	76.8	1.6	21.6	0.088	0.533	28.957337	-104.487416
T. Der. Manuel Benavides	218.00	3	0	2626	0.4	83.4	1.6	10.2	0.9	2.5	0.5	0.3	0.2	83.8	1.6	14.6	0.088	0.548	29.325776	-104.396112
Ojinaga	247.00	1	0	2606	0.9	86.1	2.0	7.0	0.4	2.4	0.4	0.4	0.4	87.0	2.0	11.0	0.127	0.533	29.517239	-104.422581

42 CARR: T. Julimes - La Boquilla

CLAVE: 08009

RUTA: CHIH-018

AÑO: 2025

LUGAR	ESTACION	CLASIFICACION VEHICULAR EN PORCIENTO												COORDENADAS							
		KM	TE	SC	TDPA	M	A	B	C2	C3	T3S2	T3S3	T3S2R4	OTROS	A	B	C	K'	D	LATITUD	LONGITUD
T. C. Meoqui - Julimes	0.00	3	0	1330	8.8	81.1	3.0	5.1	0.9	0.7	0.2	0.2	0.0	89.9	3.0	7.1	0.107	0.556	28.427467	-105.456209	
La Boquilla	7.50																				

43 CARR: Ent. El Álamo - Ent. Ricardo Flores Magón (Cuota)

CLAVE: 08046

RUTA: CHIH-D

AÑO: 2025

LUGAR	ESTACION	CLASIFICACION VEHICULAR EN PORCIENTO												COORDENADAS							
		KM	TE	SC	TDPA	M	A	B	C2	C3	T3S2	T3S3	T3S2R4	OTROS	A	B	C	K'	D	LATITUD	LONGITUD
T. C. Chihuahua - El Sueco	0.00	3	0	2291	3.2	46.0	6.2	4.2	1.6	25.3	5.9	7.0	0.6	49.2	6.2	44.6	0.077	0.523	29.486113	-106.410458	
T. C. El Sueco - Janos	75.00																				

44 CARR: Ricardo Flores Magón - Galeana (Cuota)

CLAVE: 08019

RUTA: CHIH-D

AÑO: 2025

LUGAR	ESTACION	CLASIFICACION VEHICULAR EN PORCIENTO												COORDENADAS						
		KM	TE	SC	TDPA	M	A	B	C2	C3	T3S2	T3S3	T3S2R4	OTROS	A	B	C	K'	D	LATITUD
T. C. El Sueco - Janos	0.00	3	0	3050	2.3	51.4	4.5	5.5	1.6	23.4	5.0	5.2	1.1	53.7	4.5	41.8	0.080	0.520	29.969427	-107.070335

CHIHUAHUA

44 CARR: Ricardo Flores Magón - Galeana (Cuota)

CLAVE: 08019

RUTA: CHIH-D

AÑO: 2025

LUGAR	ESTACION				CLASIFICACION VEHICULAR EN PORCIENTO														COORDENADAS	
	KM	TE	SC	TDPA	M	A	B	C2	C3	T3S2	T3S3	T3S2R4	OTROS	A	B	C	K'	D	LATITUD	LONGITUD
Galeana	58.00	1	0	3299	2.2	51.8	5.3	5.3	1.6	23.2	4.5	5.2	0.9	54.0	5.3	40.7	0.070	0.522	30.175938	-107.619154

45 CARR: Samalayuca - San Jerónimo (Cuota)

CLAVE: 08019

RUTA: CHIH-D

AÑO: 2025

LUGAR	ESTACION				CLASIFICACION VEHICULAR EN PORCIENTO														COORDENADAS	
	KM	TE	SC	TDPA	M	A	B	C2	C3	T3S2	T3S3	T3S2R4	OTROS	A	B	C	K'	D	LATITUD	LONGITUD
T. C. El Sueco - Cd. Juárez	0.00	3	0	1608	2.8	79.9	0.5	7.0	2.1	6.0	1.1	0.5	0.1	82.7	0.5	16.8	0.121	0.523	31.453191	-106.477567
San Jerónimo	28.10																			

46 CARR: T. C. (Chihuahua - Ojinaga) - La Mula (Cuota)

CLAVE: 08170

RUTA: CHIH-D

AÑO: 2025

LUGAR	ESTACION				CLASIFICACION VEHICULAR EN PORCIENTO														COORDENADAS	
	KM	TE	SC	TDPA	M	A	B	C2	C3	T3S2	T3S3	T3S2R4	OTROS	A	B	C	K'	D	LATITUD	LONGITUD
T. C. Chihuahua - Ojinaga	0.00	3	0	1722	1.7	70.9	3.1	15.4	1.5	5.0	1.3	1.0	0.1	72.6	3.1	24.3	0.088	0.553	29.146137	-105.485994
La Mula	110.00	1	0	1995	0.6	80.1	2.5	11.4	0.8	2.6	1.1	0.9	0.0	80.7	2.5	16.8	0.100	0.540	29.179664	-104.475781

47 CARR: Chihuahua - Madera

CLAVE: 08038

RUTA: CHIH-D-MEX-001-CHIH

AÑO: 2025

LUGAR	ESTACION				CLASIFICACION VEHICULAR EN PORCIENTO														COORDENADAS	
	KM	TE	SC	TDPA	M	A	B	C2	C3	T3S2	T3S3	T3S2R4	OTROS	A	B	C	K'	D	LATITUD	LONGITUD
Chihuahua	0.00																			
T. Der. Presa Chihuahua	10.50	1	1	11116	1.9	78.5	3.3	10.1	1.4	3.4	1.1	0.2	0.1	80.4	3.3	16.3	0.102	0.541	28.568550	-106.142822
T. Der. Presa Chihuahua	10.50	1	2	11337	1.9	78.1	3.4	10.0	1.5	3.5	1.2	0.3	0.1	80.0	3.4	16.6	0.124	0.541	28.568456	-106.142764
T. Der. Presa Chihuahua	10.50	3	1	10122	2.0	78.7	2.5	9.5	1.9	4.2	0.7	0.3	0.2	80.7	2.5	16.8	0.098	0.702	28.565426	-106.146661
T. Der. Presa Chihuahua	10.50	3	2	10851	1.9	79.0	2.5	9.4	2.0	4.1	0.8	0.2	0.1	80.9	2.5	16.6	0.129	0.702	28.565361	-106.146565
T. Izq. Hidalgo del Parral (Vía Corta)	36.20	1	1	7368	1.8	77.4	2.5	10.0	1.3	4.9	1.5	0.5	0.1	79.2	2.5	18.3	0.087	0.670	28.364798	-106.257942
T. Izq. Hidalgo del Parral (Vía Corta)	36.20	1	2	6697	1.7	77.4	2.7	9.8	1.1	5.1	1.7	0.4	0.1	79.1	2.7	18.2	0.125	0.670	28.364724	-106.257874
T. Izq. Hidalgo del Parral (Vía Corta)	36.20	3	1	5943	1.9	77.4	2.6	8.6	1.4	5.1	2.0	0.8	0.2	79.3	2.6	18.1	0.095	0.657	28.357427	-106.269395
T. Izq. Hidalgo del Parral (Vía Corta)	36.20	3	2	5754	2.1	77.3	2.7	8.8	1.2	4.9	2.0	0.8	0.2	79.4	2.7	17.9	0.151	0.657	28.357370	-106.269474
Cuahtémoc	103.50	1	1	6672	2.0	76.5	2.9	13.9	1.5	1.6	1.0	0.6	0.0	78.5	2.9	18.6	0.099	0.604	28.401584	-106.828784
Cuahtémoc	103.50	1	2	6164	2.2	76.7	2.8	13.8	1.4	1.7	0.9	0.5	0.0	78.9	2.8	18.3	0.087	0.604	28.401478	-106.828839
Cuahtémoc	103.50	3	1	11918	3.8	78.6	2.0	12.4	1.0	0.9	0.7	0.5	0.1	82.4	2.0	15.6	0.099	0.502	28.401356	-106.886401
Cuahtémoc	103.50	3	2	12520	3.8	78.6	2.0	12.5	1.0	0.8	0.7	0.5	0.1	82.4	2.0	15.6	0.090	0.502	28.401667	-106.888166
T. Der. Álvaro Obregón	107.10	3	1	7151	2.0	83.4	1.4	6.7	2.3	1.9	1.4	0.6	0.3	85.4	1.4	13.2	0.094	0.592	28.399154	-106.925758
T. Der. Álvaro Obregón	107.10	3	2	6520	2.1	83.3	1.5	6.9	2.6	1.7	1.1	0.5	0.3	85.4	1.5	13.1	0.097	0.592	28.399063	-106.925740

CHIHUAHUA

47 CARR: Chihuahua - Madera

CLAVE: 08038

RUTA: CHIH-D-MEX-001-CHIH

AÑO: 2025

LUGAR	ESTACION				CLASIFICACION VEHICULAR EN PORCIENTO													COORDENADAS		
	KM	TE	SC	TDPA	M	A	B	C2	C3	T3S2	T3S3	T3S2R4	OTROS	A	B	C	K'	D	LATITUD	LONGITUD
T. Izq. Yepachi	150.80	1	1	3240	1.5	81.8	2.8	9.0	1.3	2.3	1.0	0.2	0.1	83.3	2.8	13.9	0.094	0.502	28.466974	-107.286602
T. Izq. Yepachi	150.80	1	2	3427	1.6	81.7	2.9	8.9	1.1	2.4	1.1	0.2	0.1	83.3	2.9	13.8	0.099	0.502	28.466851	-107.286675
Guerrero	169.80	3	0	3090	2.8	88.2	1.2	3.7	1.3	1.2	1.6	0.0	0.0	91.0	1.2	7.8	0.087	0.532	28.552807	-107.495311
T. Der. Peña Blanca	261.30	1	0	1086	1.9	81.1	1.8	6.6	1.5	2.2	4.4	0.4	0.1	83.0	1.8	15.2	0.099	0.657	29.114588	-107.899404
T. Der. Peña Blanca	261.30	3	0	975	1.5	82.6	2.1	7.0	2.5	1.5	2.6	0.1	0.1	84.1	2.1	13.8	0.112	0.615	29.120045	-107.908099
Madera	279.00																			

48 CARR: Ent. Agua Caliente - El Terrero

CLAVE: 08170

RUTA: CHIH-MEX

AÑO: 2025

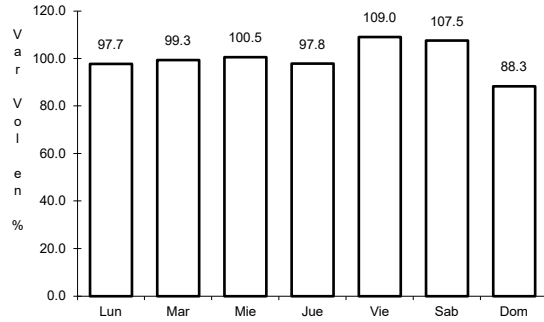
LUGAR	ESTACION				CLASIFICACION VEHICULAR EN PORCIENTO													COORDENADAS		
	KM	TE	SC	TDPA	M	A	B	C2	C3	T3S2	T3S3	T3S2R4	OTROS	A	B	C	K'	D	LATITUD	LONGITUD
T. C. Chihuahua - El Sueco	0.00	3	0	863	3.2	60.2	1.0	22.2	5.2	5.7	1.9	0.4	0.2	63.4	1.0	35.6	0.124	0.626	29.095540	-106.345575
Nuevas Delicias	22.00	1	0	882	4.2	74.9	1.3	14.8	2.0	1.9	0.6	0.2	0.1	79.1	1.3	19.6	0.119	0.638	29.088626	-106.467890
El Terrero	120.00	1	0	1744	2.4	91.2	1.0	3.4	0.7	0.6	0.4	0.2	0.1	93.6	1.0	5.4	0.084	0.565	29.177243	-107.373553



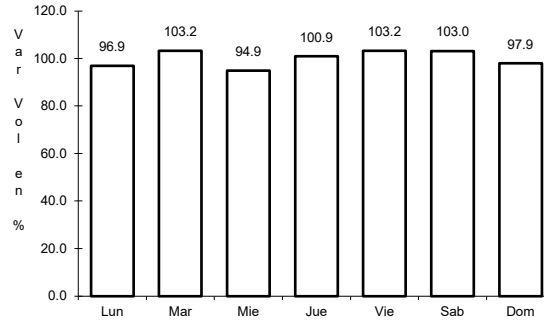
1 CARR: Cd. Juárez - Janos

CLAVE: 08041

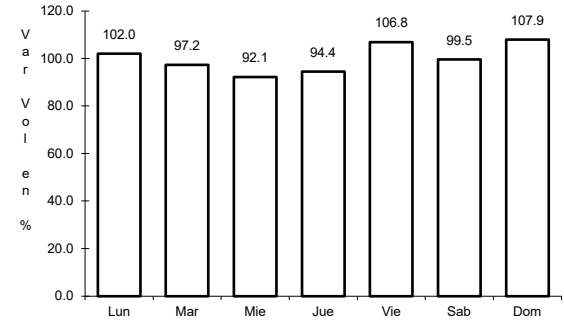
ruta: MEX-002



Km: 0.00                      Tipo: 3                      Sent: 1



Km: 0.00                      Tipo: 3                      Sent: 2

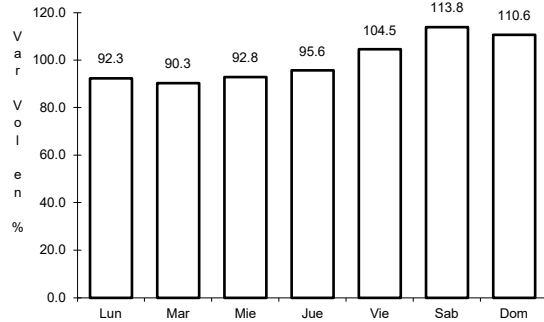


Km: 205.00                      Tipo: 1                      Sent: 0

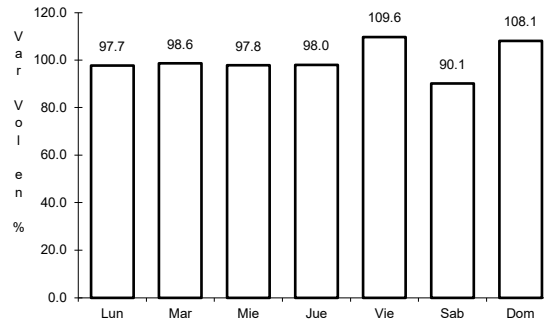
2 CARR: Chihuahua - El Sucedo

CLAVE: 08419

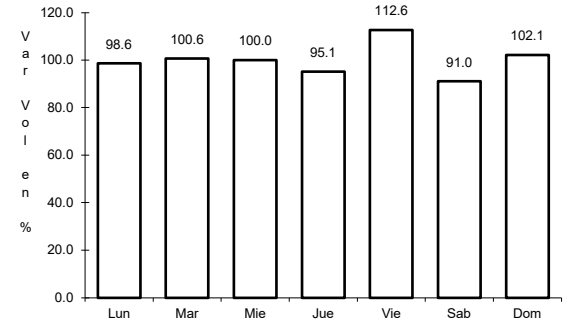
ruta: MEX-045



Km: 24.00                      Tipo: 1                      Sent: 0



Km: 155.87                      Tipo: 1                      Sent: 1

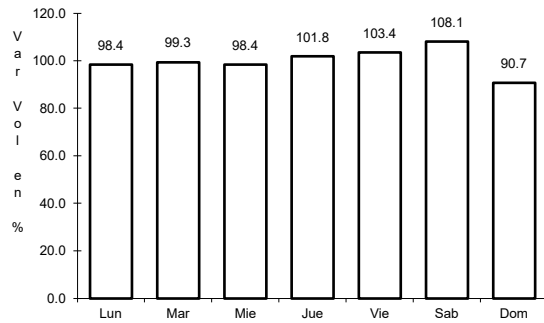


Km: 155.87                      Tipo: 1                      Sent: 2

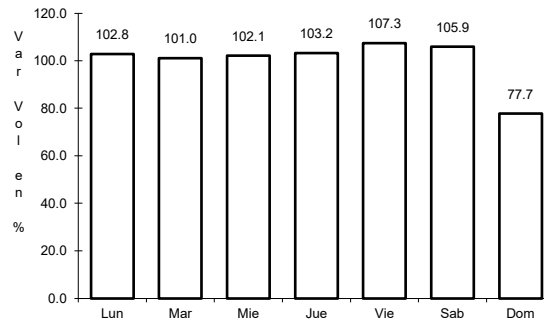
3 CARR: Chihuahua - Ojinaga

CLAVE: 08042

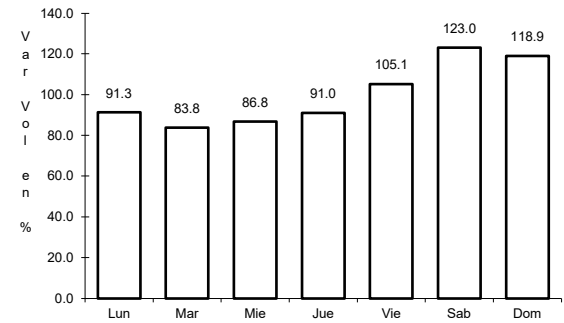
ruta: MEX-016



Km: 6.50                      Tipo: 1                      Sent: 1



Km: 6.50                      Tipo: 1                      Sent: 2

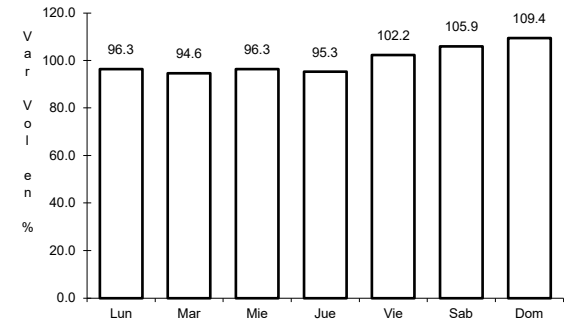
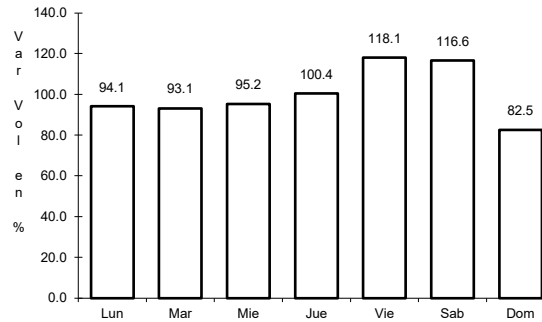
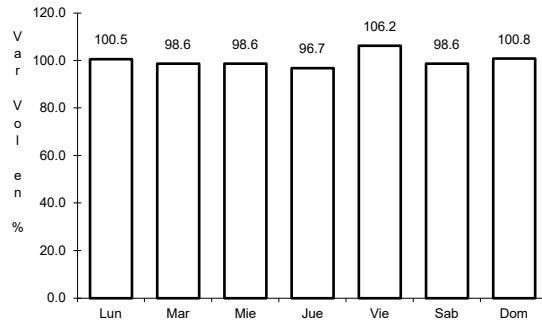


Km: 224.00                      Tipo: 1                      Sent: 0

4 CARR: Delicias - Chihuahua (Libre)

CLAVE: 08418

ruta: MEX-045



Km: 150.10 Tipo: 3 Sent: 1

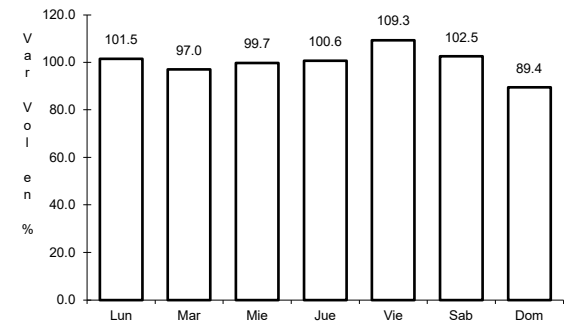
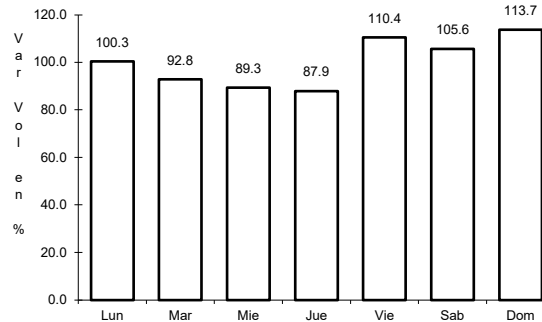
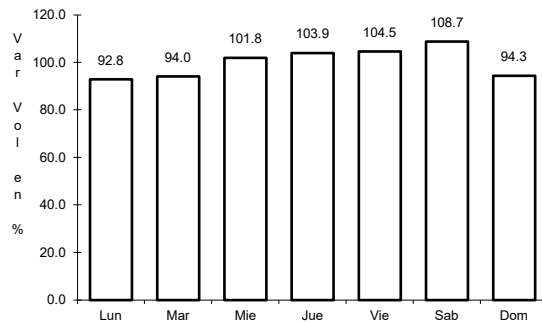
Km: 150.10 Tipo: 3 Sent: 2

Km: 210.00 Tipo: 1 Sent: 1

5 CARR: El Sueco - Janos

CLAVE: 08037

ruta: MEX-010



Km: 0.00 Tipo: 3 Sent: 0

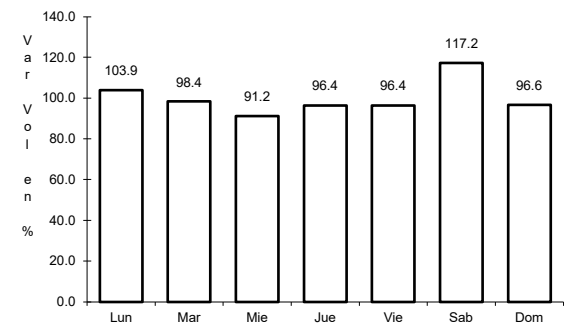
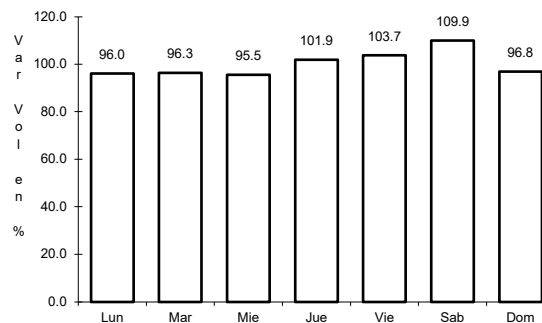
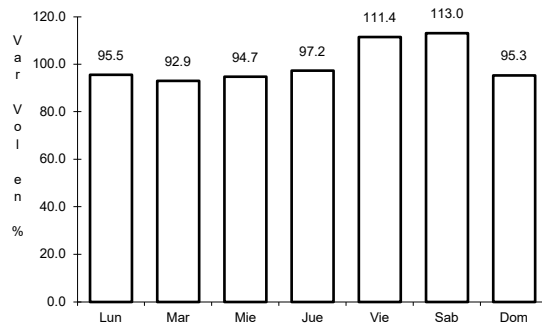
Km: 114.00 Tipo: 1 Sent: 0

Km: 257.00 Tipo: 1 Sent: 0

6 CARR: Ent. Ciudad Camargo - Saucillo

CLAVE: 08417

ruta: MEX-045



Km: 72.00 Tipo: 3 Sent: 0

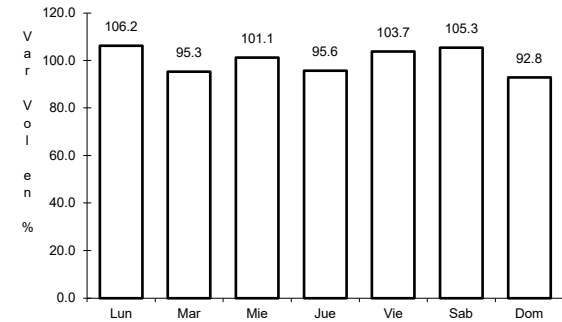
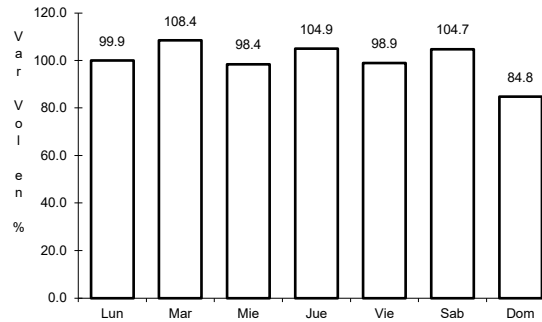
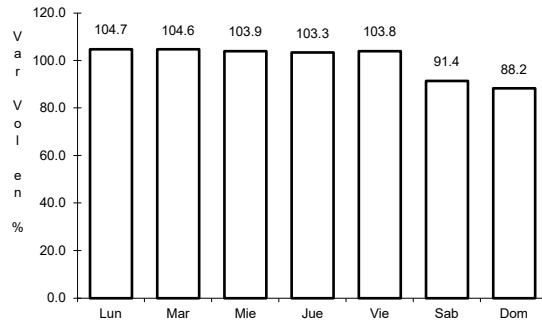
Km: 88.60 Tipo: 3 Sent: 0

Km: 109.50 Tipo: 1 Sent: 0

7 CARR: Ent. La Zarca - Hidalgo del Parral

CLAVE: 00488

ruta: MEX-045



Km: 238.60 Tipo: 3 Sent: 0

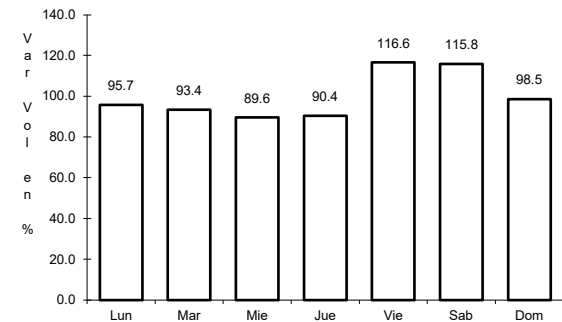
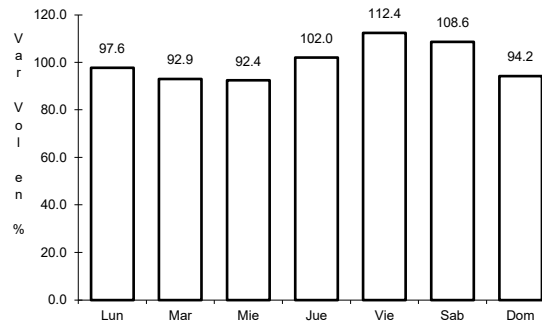
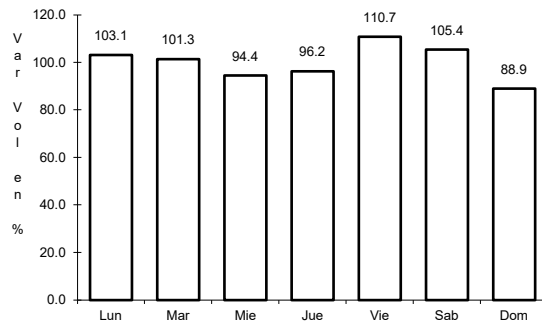
Km: 329.27 Tipo: 3 Sent: 0

Km: 408.10 Tipo: 1 Sent: 0

8 CARR: Ent. Nuevo Palomas - Hidalgo del Parral (Vía Corta)

CLAVE: 08811

ruta: MEX-024



Km: 0.00 Tipo: 3 Sent: 0

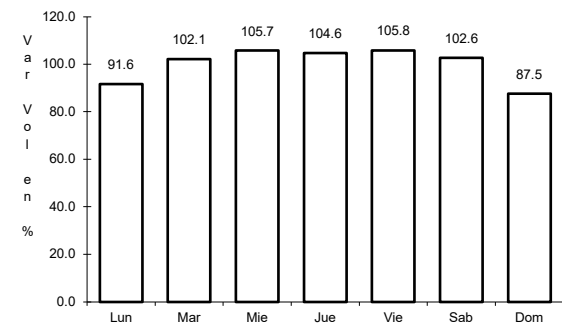
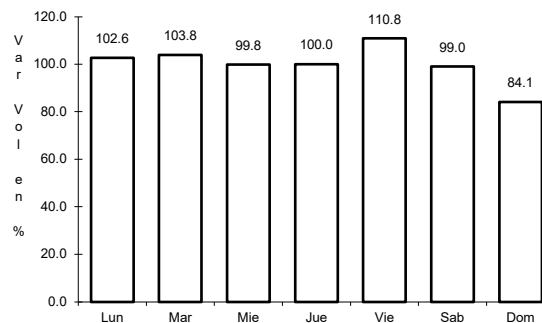
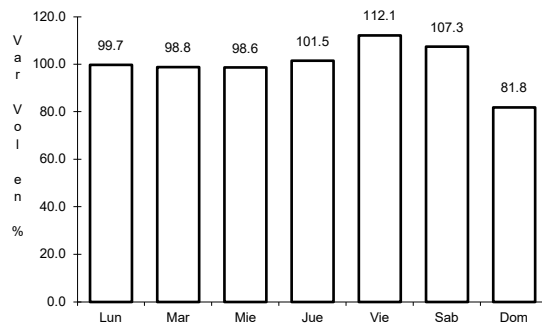
Km: 120.00 Tipo: 3 Sent: 0

Km: 184.90 Tipo: 1 Sent: 0

9 CARR: Gómez Palacio - Jiménez

CLAVE: 00006

ruta: MEX-049



Km: 0.00 Tipo: 3 Sent: 1

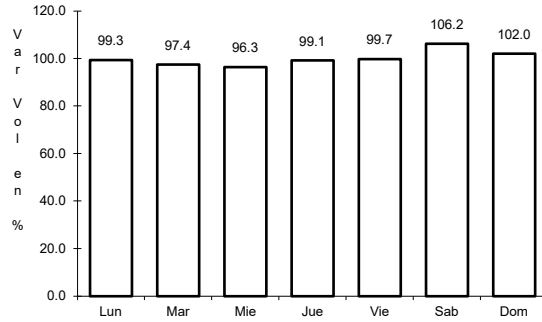
Km: 0.00 Tipo: 3 Sent: 2

Km: 107.95 Tipo: 1 Sent: 0

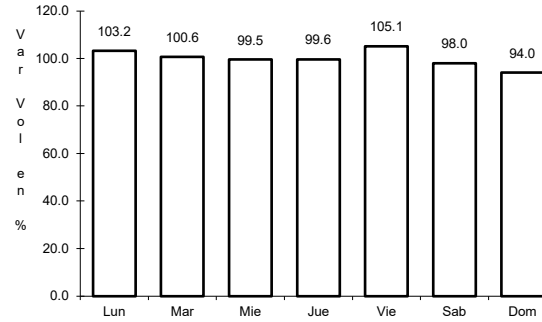
10 CARR: Hidalgo del Parral - Guadalupe y Calvo

CLAVE: 00802

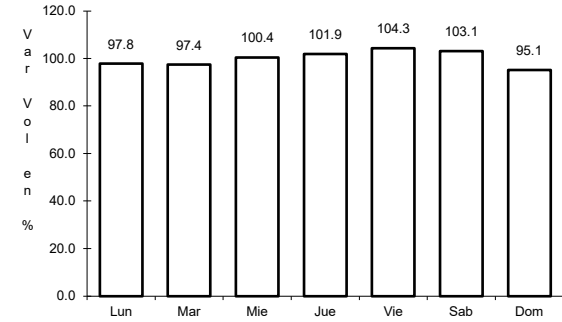
ruta: MEX-024



Km: 0.00      Tipo: 3      Sent: 0



Km: 110.00      Tipo: 1      Sent: 0

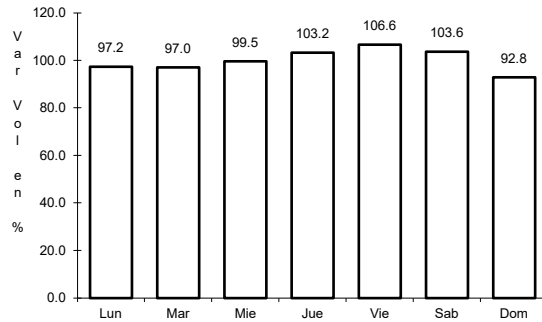


Km: 212.00      Tipo: 1      Sent: 0

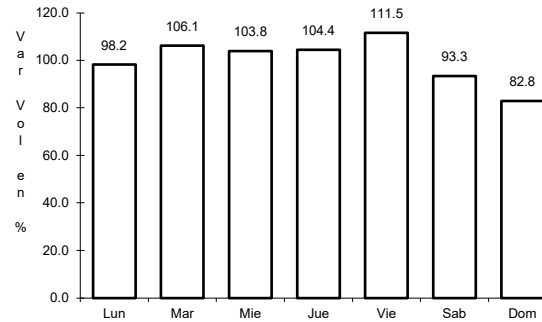
11 CARR: Hidalgo del Parral - Jiménez

CLAVE: 08444

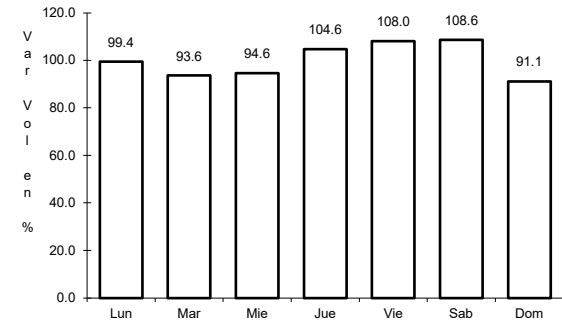
ruta: MEX-045



Km: 0.00      Tipo: 3      Sent: 1



Km: 0.00      Tipo: 3      Sent: 2

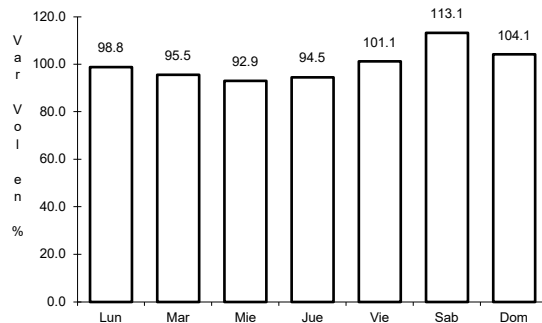


Km: 76.63      Tipo: 1      Sent: 1

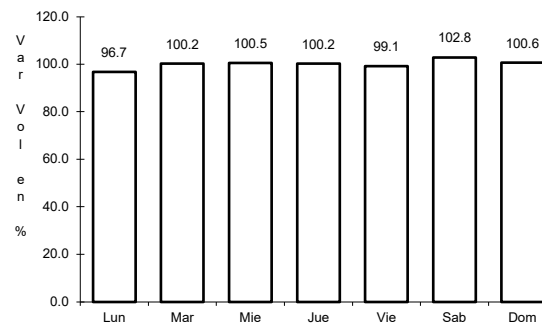
12 CARR: Janos - Agua Prieta

CLAVE: 00220

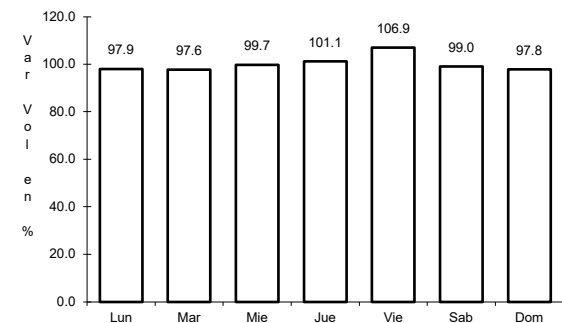
ruta: MEX-002



Km: 0.00      Tipo: 3      Sent: 0



Km: 56.00      Tipo: 3      Sent: 0

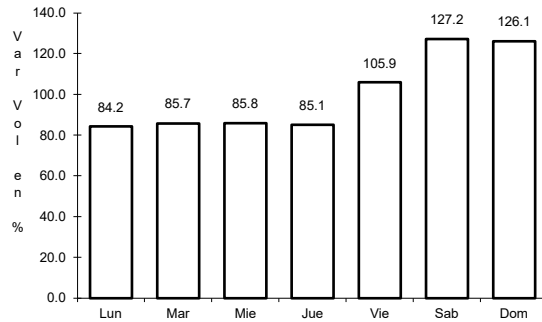


Km: 160.00      Tipo: 1      Sent: 0

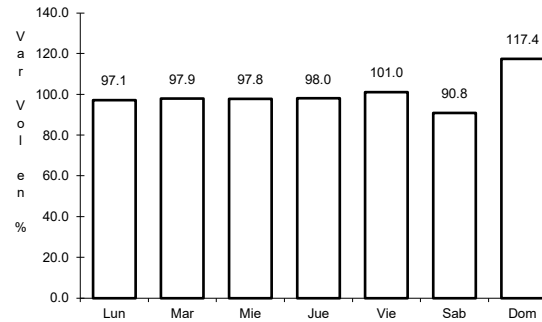
13 CARR: La Junta - Lim. Edos. Term. Chih. Ppia. Son (Yécora)

CLAVE: 00065

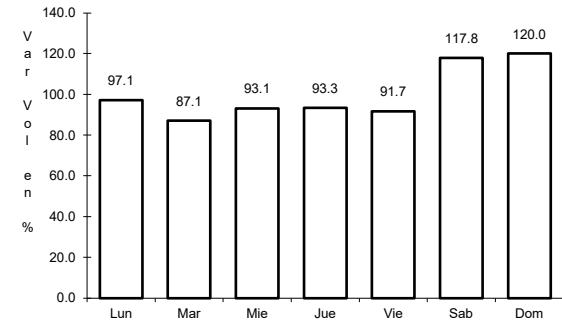
ruta: MEX-016



Km: 150.00 Tipo: 3 Sent: 0



Km: 166.30 Tipo: 1 Sent: 0

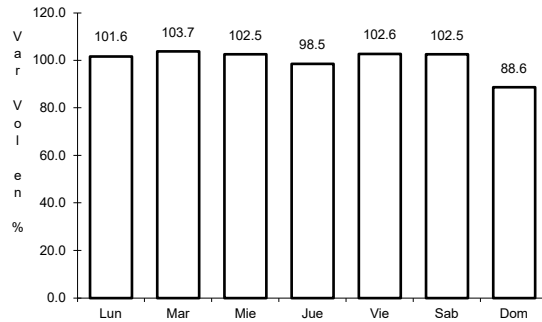


Km: 217.40 Tipo: 3 Sent: 0

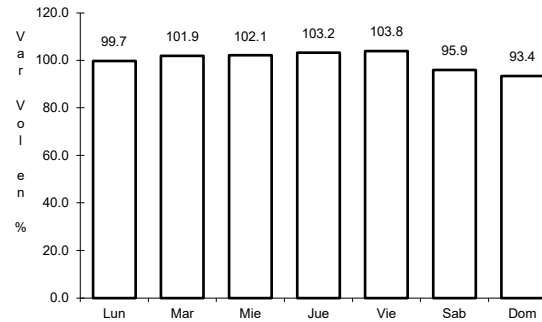
14 CARR: Libramiento de Delicias - Meoqui

CLAVE: 08813

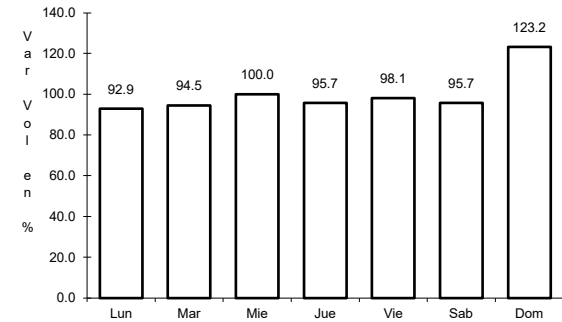
ruta: MEX-045



Km: 136.40 Tipo: 3 Sent: 1



Km: 136.40 Tipo: 3 Sent: 2

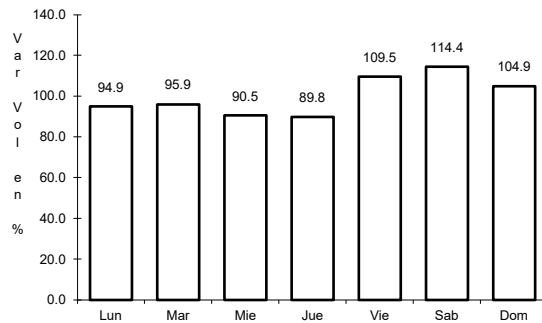


Km: 150.00 Tipo: 1 Sent: 1

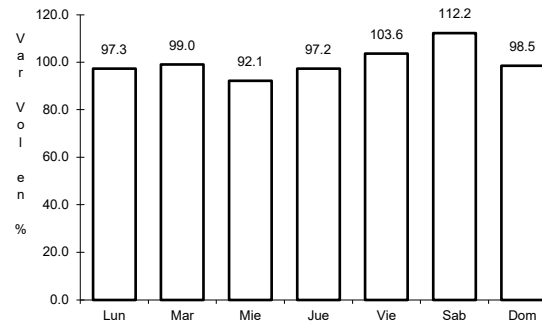
15 CARR: Porvenir - Cd. Juárez

CLAVE: 08169

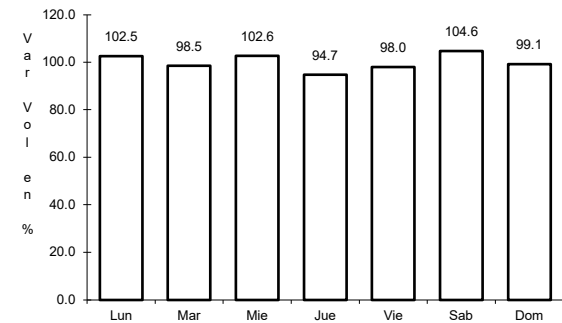
ruta: MEX-002



Km: 1.67 Tipo: 3 Sent: 0



Km: 70.32 Tipo: 1 Sent: 1

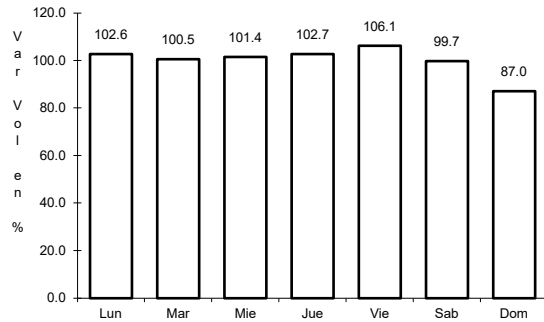


Km: 70.32 Tipo: 1 Sent: 2

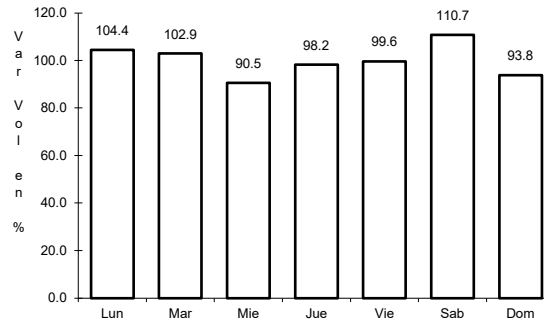
16 CARR: Ramal a Aeropuerto de Chihuahua

CLAVE: 08421

ruta: MEX-016



Km: 0.00                      Tipo: 3                      Sent: 1

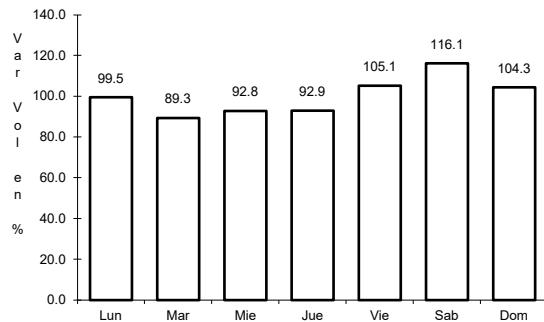


Km: 0.00                      Tipo: 3                      Sent: 2

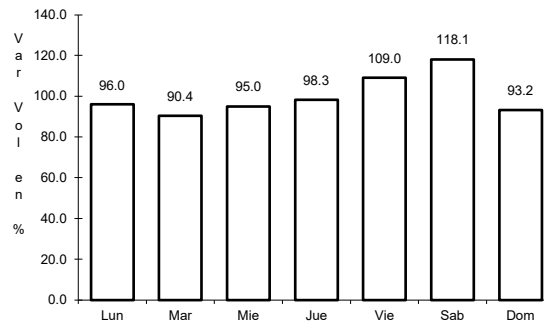
17 CARR: Ramal a Palomas

CLAVE: 08019

ruta: MEX-002



Km: 0.00                      Tipo: 3                      Sent: 0

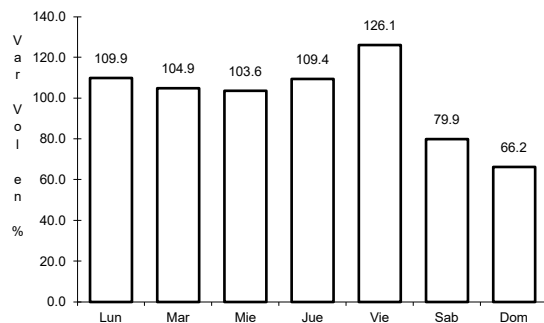


Km: 4.50                      Tipo: 3                      Sent: 0

18 CARR: San Jerónimo - Santa Teresa

CLAVE: 08043

ruta: MEX-002

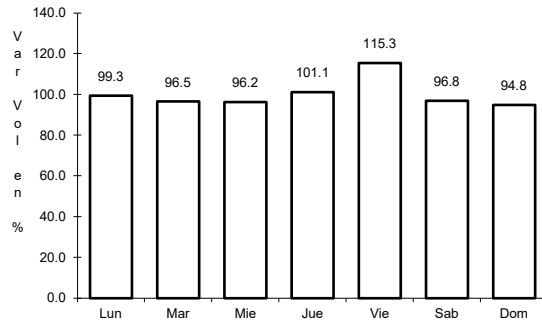


Km: 0.00                      Tipo: 3                      Sent: 0

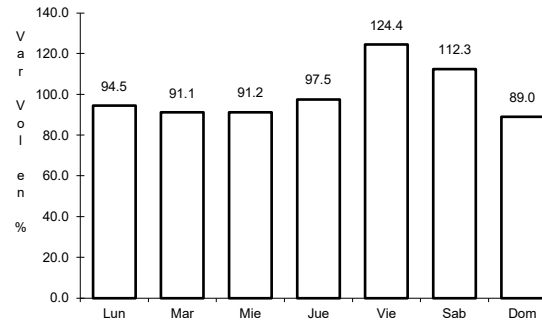
19 CARR: Villa Ahumada - Cd. Juárez (Libre)

CLAVE: 08420

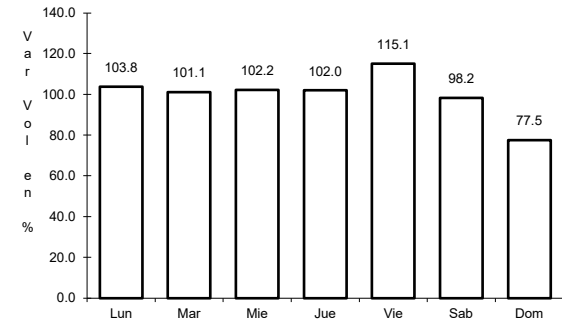
ruta: MEX-045



Km: 237.00      Tipo: 3      Sent: 1



Km: 237.00      Tipo: 3      Sent: 2

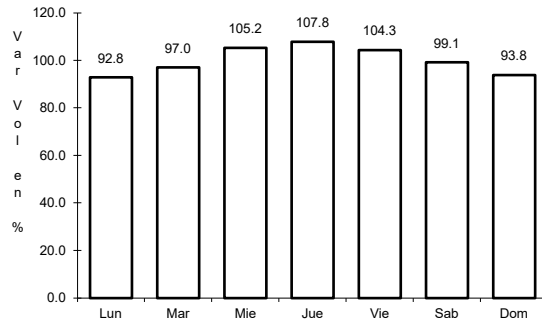


Km: 353.60      Tipo: 1      Sent: 1

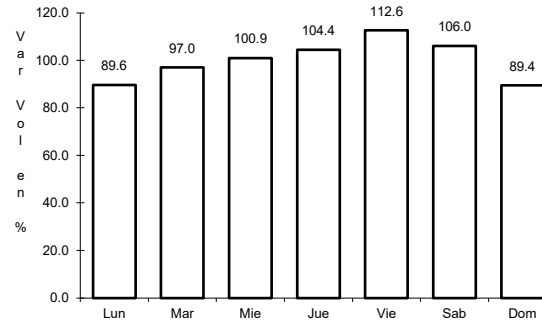
20 CARR: Camargo - Delicias (Cuota)

CLAVE: 08418

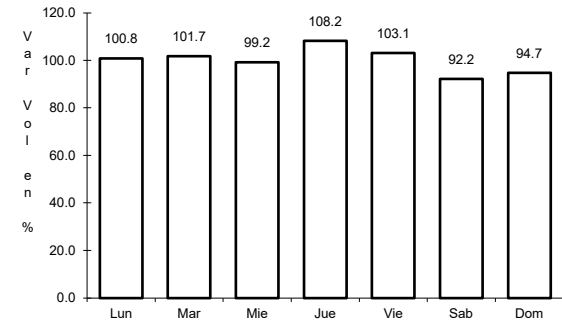
ruta: MEX-045D



Km: 72.00      Tipo: 1      Sent: 1



Km: 72.00      Tipo: 1      Sent: 2

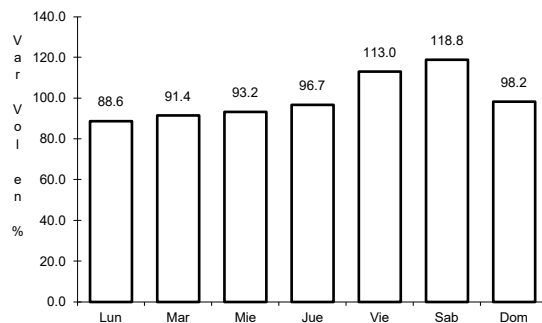


Km: 138.00      Tipo: 1      Sent: 1

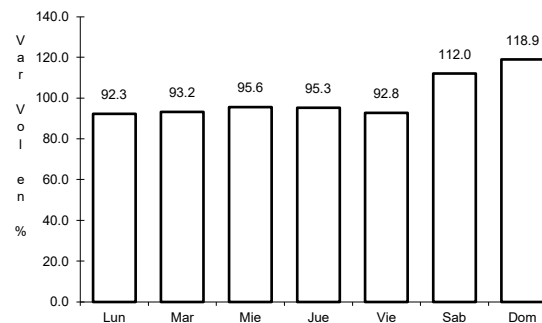
21 CARR: Chihuahua - Sacramento (Cuota)

CLAVE: 08015

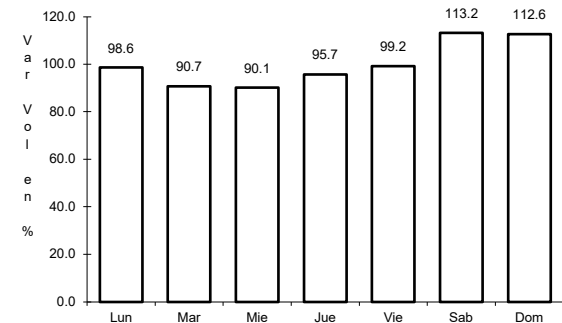
ruta: MEX-045D



Km: 18.12      Tipo: 3      Sent: 1



Km: 18.12      Tipo: 3      Sent: 2

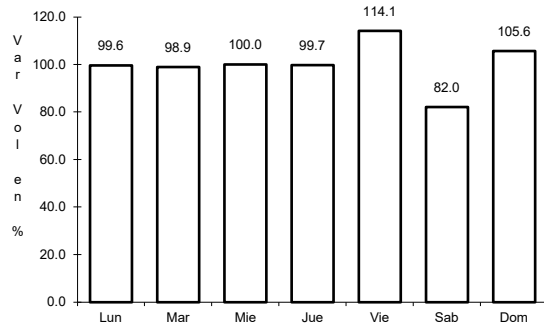


Km: 21.17      Tipo: 3      Sent: 1

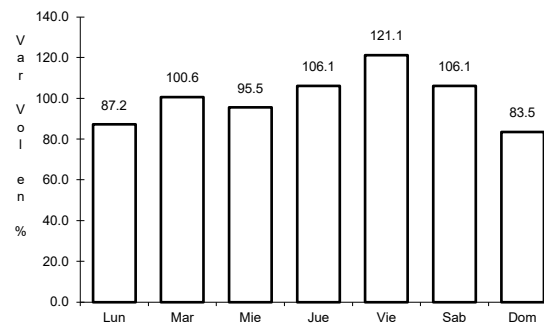
22 CARR: El Sueco - Villa Ahumada (Cuota)

CLAVE: 08420

ruta: MEX-045D



Km: 0.00      Tipo: 3      Sent: 1

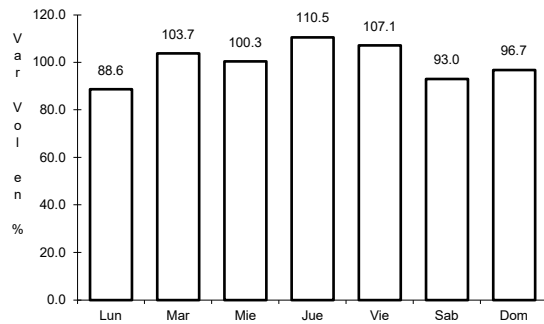


Km: 0.00      Tipo: 3      Sent: 2

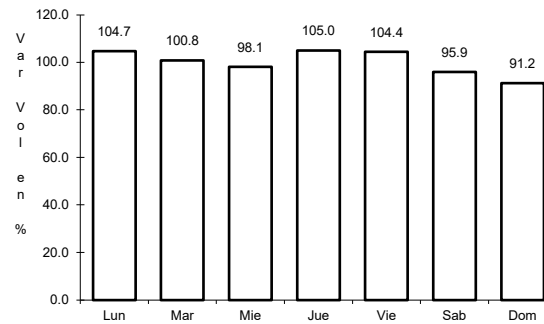
23 CARR: Gómez Palacio - Corralitos (Cuota)

CLAVE: 00016

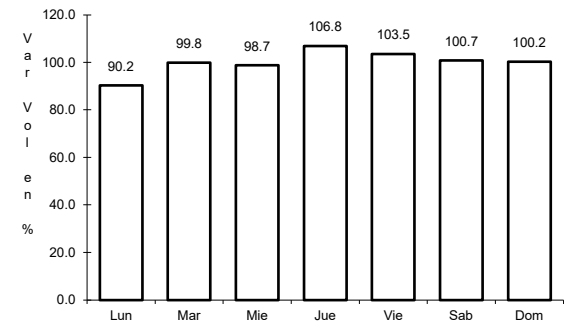
ruta: MEX-049D



Km: 40.10      Tipo: 1      Sent: 1



Km: 40.10      Tipo: 1      Sent: 2

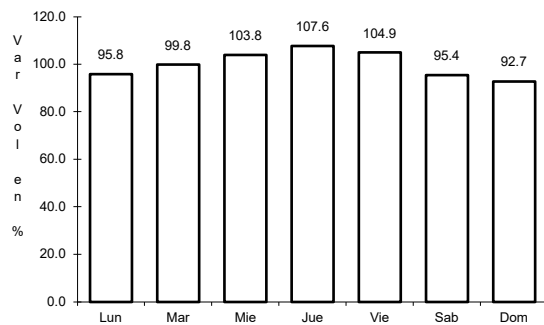


Km: 226.50      Tipo: 1      Sent: 1

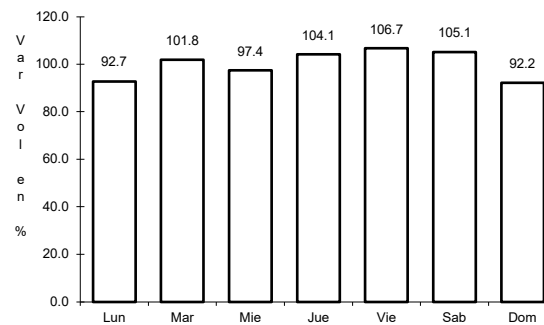
24 CARR: Jiménez - Camargo (Cuota)

CLAVE: 08418

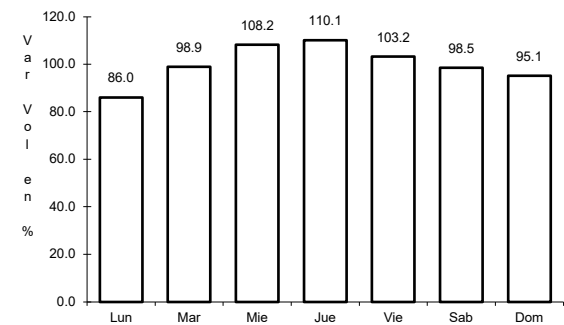
ruta: MEX-045D



Km: 0.00      Tipo: 3      Sent: 1



Km: 0.00      Tipo: 3      Sent: 2

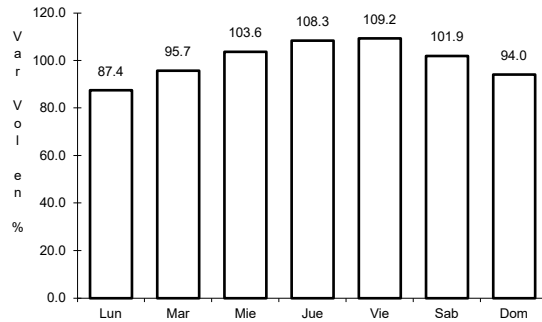


Km: 68.98      Tipo: 1      Sent: 1

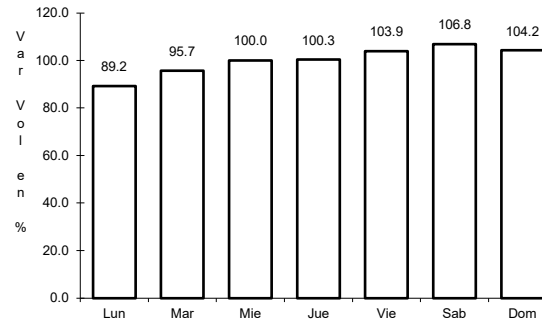
25 CARR: Libramiento Oriente Chihuahua (Cuota)

CLAVE:

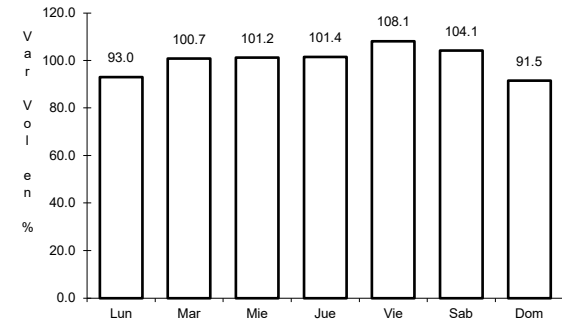
RUTA: MEX-045D



Km: 0.00                      Tipo: 3                      Sent: 0



Km: 22.00                      Tipo: 1                      Sent: 0

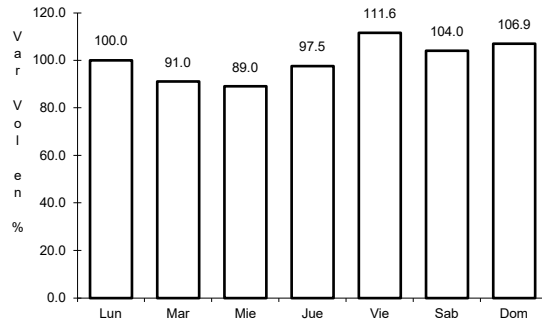


Km: 22.00                      Tipo: 3                      Sent: 0

26 CARR: Libramiento Sur de Cd. Juárez (Cuota)

CLAVE:

RUTA: MEX-045D

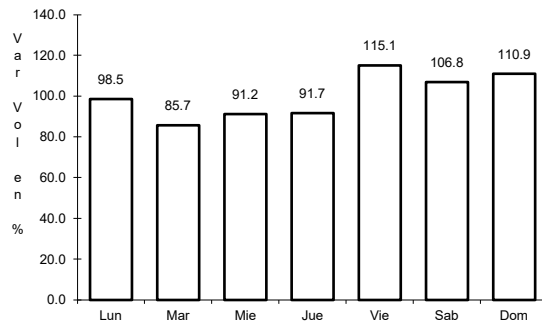


Km: 0.00                      Tipo: 3                      Sent: 0

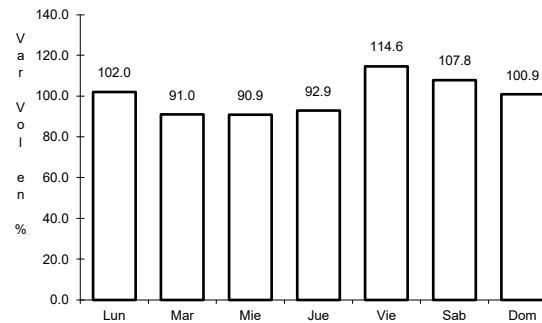
27 CARR: Ahumada - Ricardo Flores Magón

CLAVE: 08804

RUTA: CHIH



Km: 0.00                      Tipo: 3                      Sent: 0

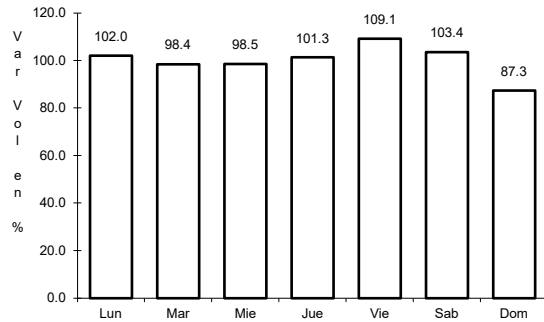


Km: 96.00                      Tipo: 1                      Sent: 0

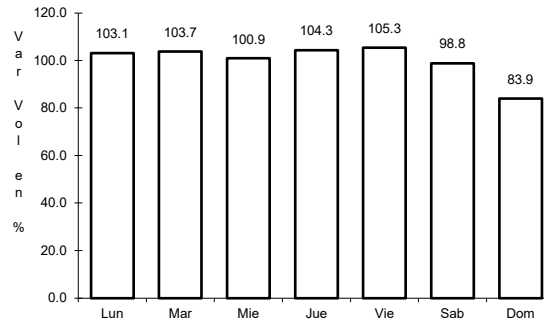
28 CARR: Camargo - Jiménez

CLAVE: 08021

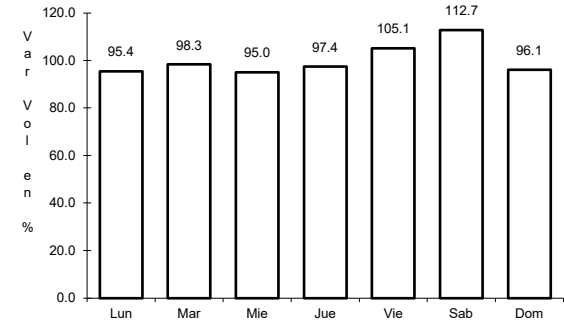
ruta: CHIH-049



Km: 0.00      Tipo: 3      Sent: 0



Km: 9.60      Tipo: 1      Sent: 0

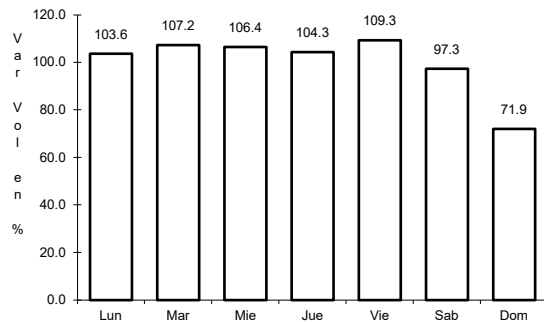


Km: 77.00      Tipo: 1      Sent: 0

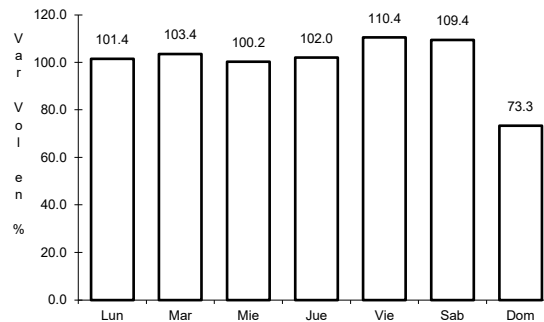
29 CARR: Cuauhtémoc - Buenaventura

CLAVE: 08015

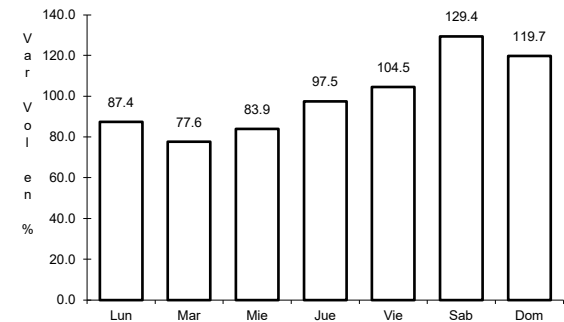
ruta: CHIH



Km: 0.00      Tipo: 3      Sent: 1



Km: 0.00      Tipo: 3      Sent: 2

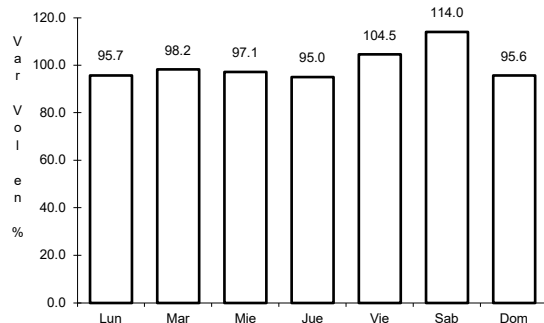


Km: 253.30      Tipo: 1      Sent: 0

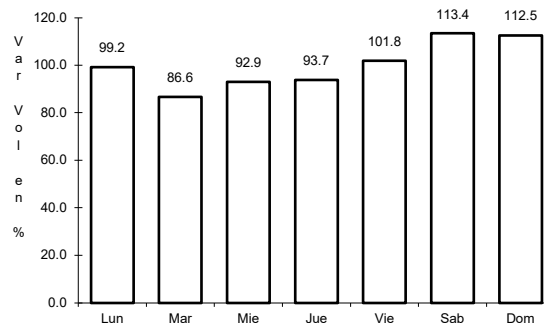
30 CARR: Delicias - Saucillo

CLAVE: 08007

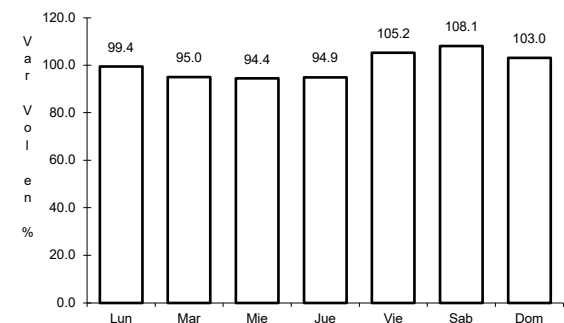
ruta: CHIH-007



Km: 0.00      Tipo: 3      Sent: 0



Km: 17.00      Tipo: 1      Sent: 0

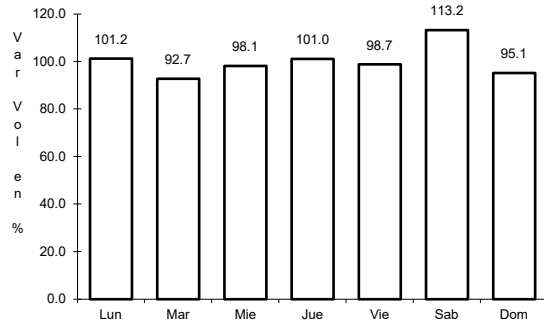


Km: 33.00      Tipo: 1      Sent: 0

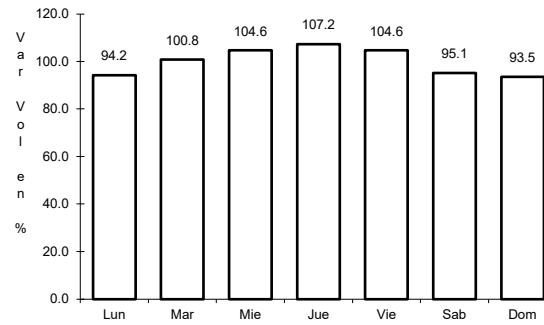
31 CARR: Ent. Peña Blanca - Ent. La Concha

CLAVE: 08493

ruta: CHIH



Km: 0.00                      Tipo: 3                      Sent: 0

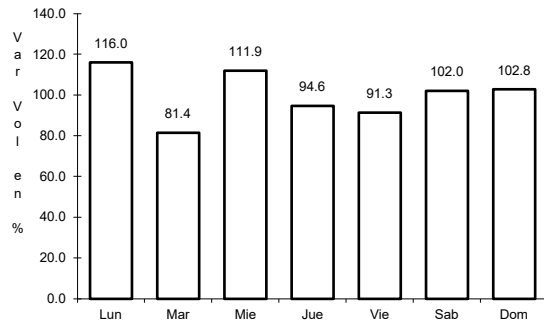


Km: 17.00                      Tipo: 1                      Sent: 0

32 CARR: Ent. Puerto Justo - Ent. Guachochic

CLAVE: 08044

ruta: CHIH

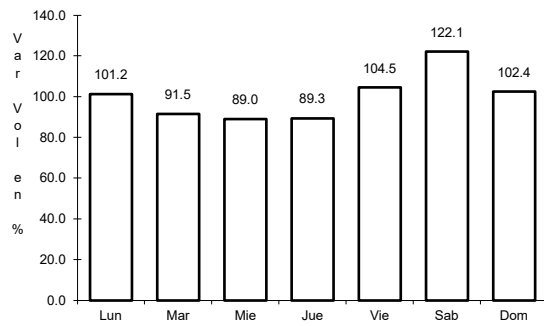


Km: 0.00                      Tipo: 3                      Sent: 0

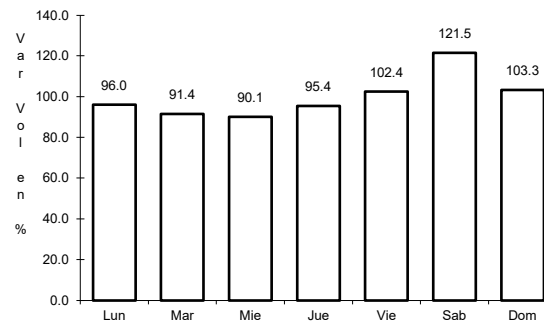
33 CARR: Lázaro Cárdenas - Ent. Colonia San José

CLAVE: 08004

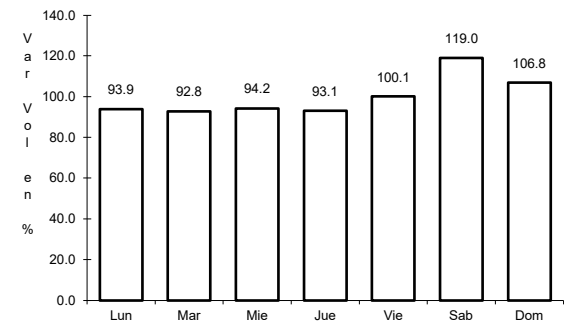
ruta: CHIH-004



Km: 0.00                      Tipo: 3                      Sent: 1



Km: 0.00                      Tipo: 3                      Sent: 2

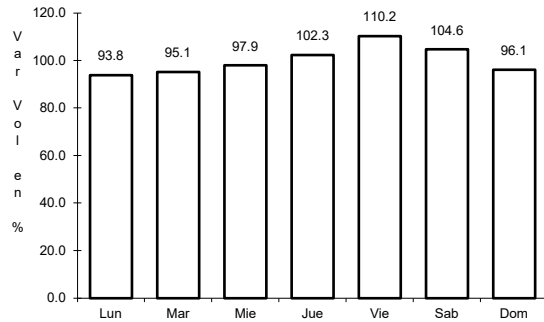


Km: 18.90                      Tipo: 1                      Sent: 0

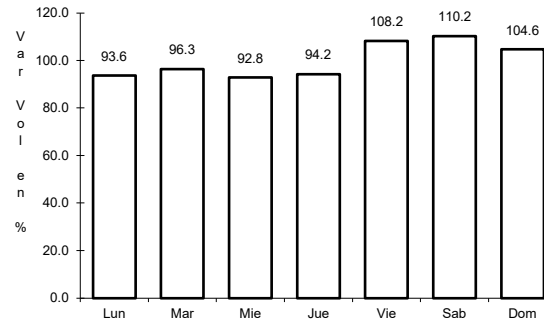
34 CARR: Libramiento de Hidalgo del Parral

CLAVE: 08221

RUTA: CHIH



Km: 8.00      Tipo: 3      Sent: 1

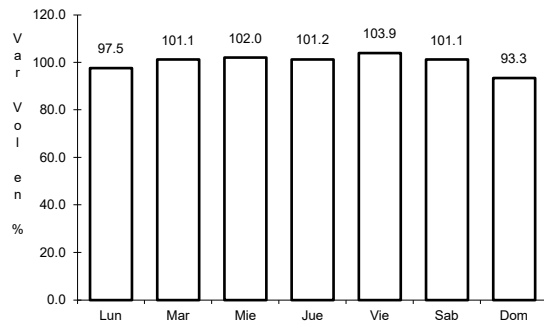


Km: 8.00      Tipo: 3      Sent: 2

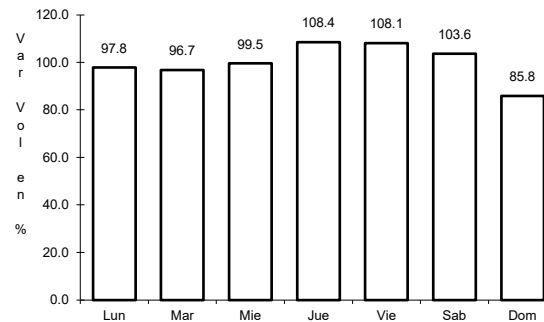
35 CARR: Libramiento de Jiménez

CLAVE: 08047

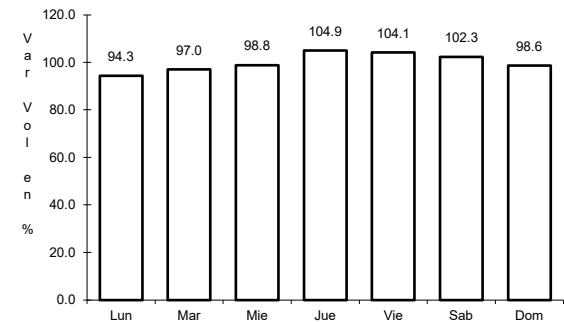
RUTA: CHIH



Km: 0.00      Tipo: 3      Sent: 1



Km: 0.00      Tipo: 3      Sent: 2

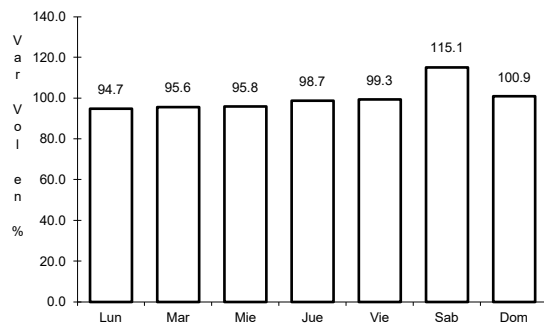


Km: 3.40      Tipo: 1      Sent: 1

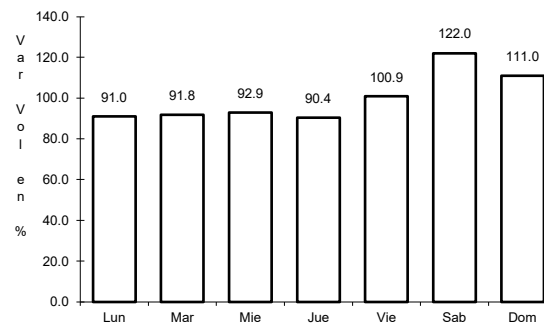
36 CARR: Mecoqui - Julimes

CLAVE: 08005

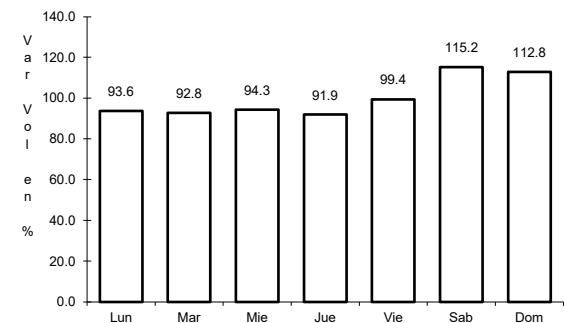
RUTA: CHIH-005



Km: 0.00      Tipo: 3      Sent: 0



Km: 15.40      Tipo: 3      Sent: 0

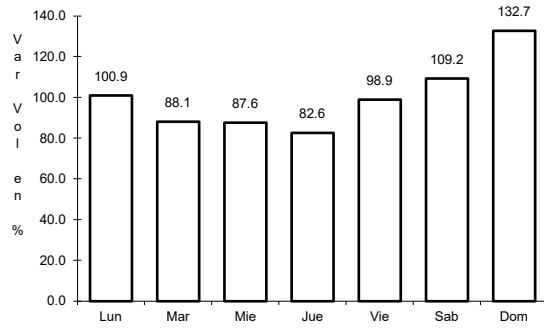


Km: 23.00      Tipo: 1      Sent: 0

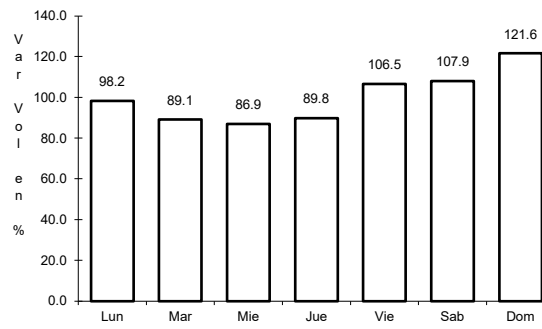
37 CARR: Ramal a San Pedro Creel

CLAVE: 08812

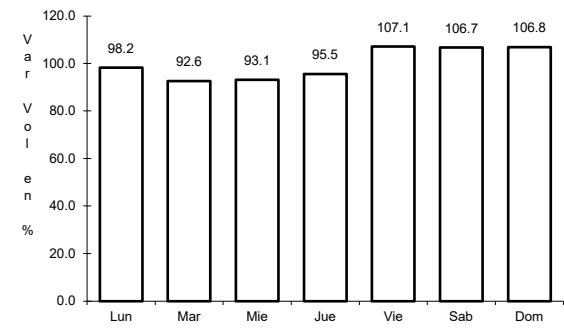
ruta: CHIH-025



Km: 0.00      Tipo: 3      Sent: 0



Km: 58.00      Tipo: 3      Sent: 0

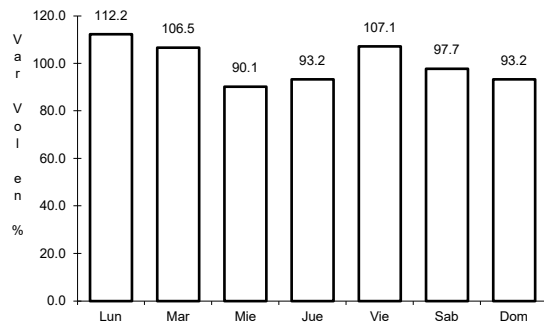


Km: 85.00      Tipo: 1      Sent: 0

38 CARR: Samachique - Batopilas

CLAVE:

ruta: CHIH

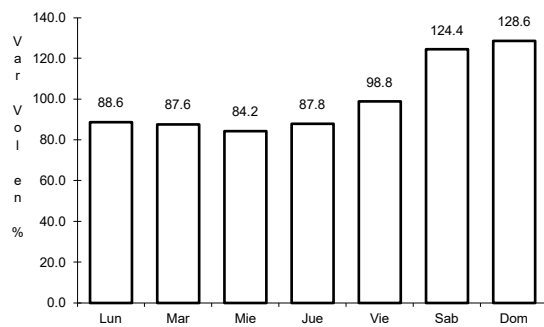


Km: 0.00      Tipo: 3      Sent: 0

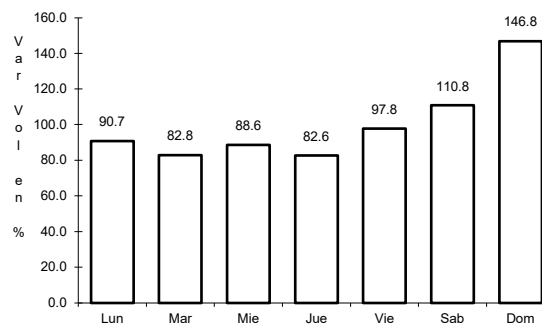
39 CARR: San Juanito - Ent. Basaseachi

CLAVE: 08045

ruta: CHIH



Km: 0.00      Tipo: 3      Sent: 0

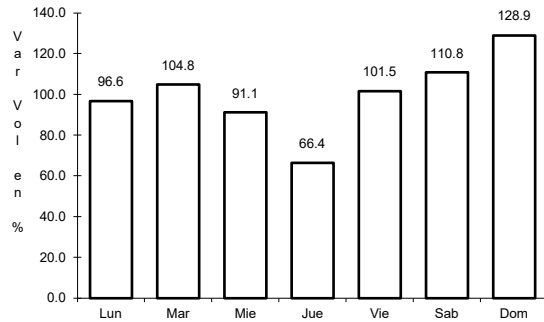


Km: 84.00      Tipo: 1      Sent: 0

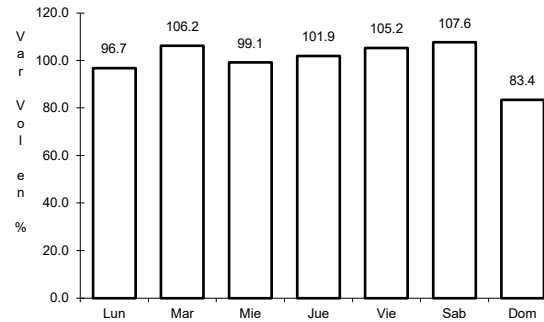
40 CARR: San Pedro Creel - Guachochi

CLAVE:

RUTA: CHIH-025



Km: 164.30      Tipo: 1      Sent: 0

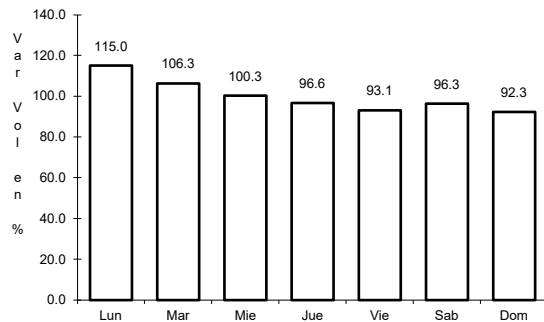


Km: 164.30      Tipo: 3      Sent: 0

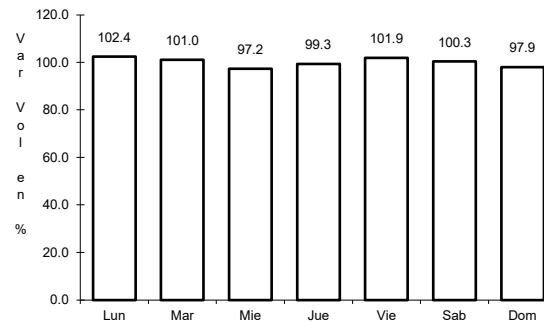
41 CARR: T. C. (Camargo - Jiménez) - Ojinaga

CLAVE: 08009

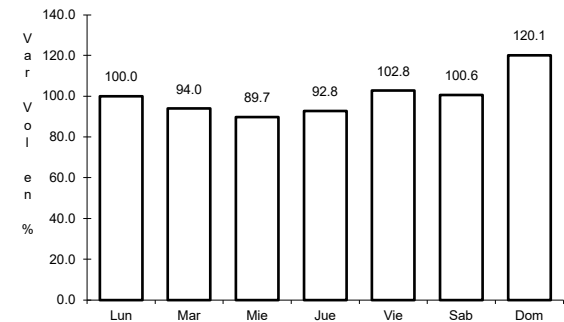
RUTA: CHIH-018



Km: 0.00      Tipo: 3      Sent: 1



Km: 97.00      Tipo: 3      Sent: 0

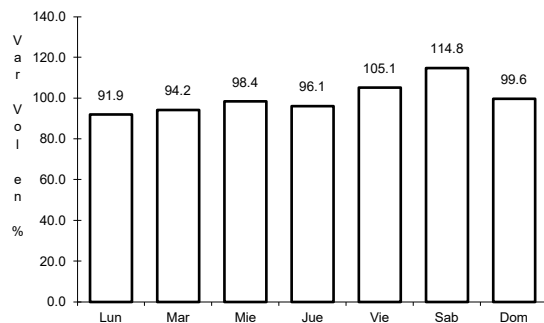


Km: 247.00      Tipo: 1      Sent: 0

42 CARR: T. Julimes - La Boquilla

CLAVE: 08009

RUTA: CHIH-018

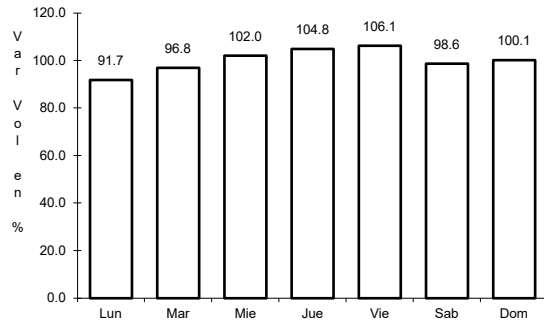


Km: 0.00      Tipo: 3      Sent: 0

43 CARR: Ent. El Álamo - Ent. Ricardo Flores Magón (Cuota)

CLAVE: 08046

RUTA: CHIH-D



Km: 0.00

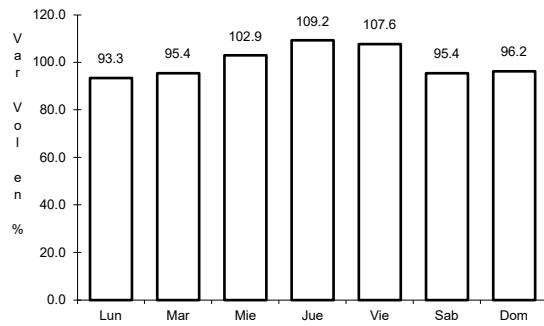
Tipo: 3

Sent: 0

44 CARR: Ricardo Flores Magón - Galeana (Cuota)

CLAVE: 08019

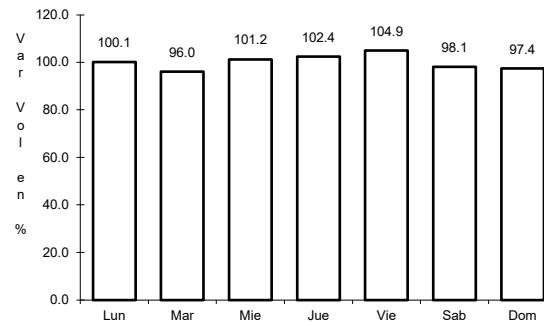
RUTA: CHIH-D



Km: 0.00

Tipo: 3

Sent: 0



Km: 58.00

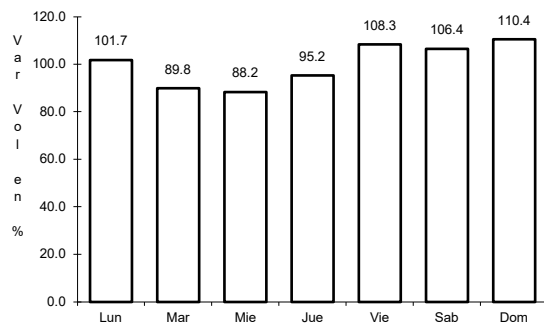
Tipo: 1

Sent: 0

45 CARR: Samalayuca - San Jerónimo (Cuota)

CLAVE: 08019

RUTA: CHIH-D



Km: 0.00

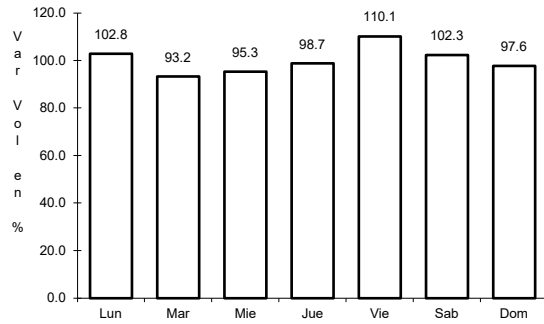
Tipo: 3

Sent: 0

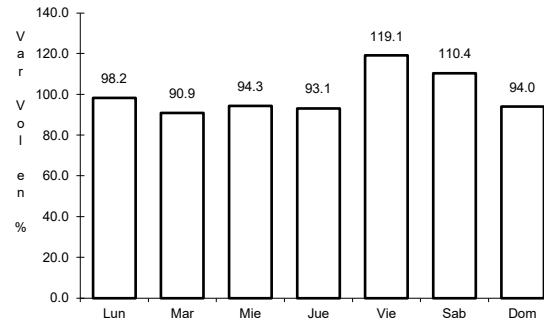
46 CARR: T. C. (Chihuahua - Ojinaga) - La Mula (Cuota)

CLAVE: 08170

ruta: CHIH-D



Km: 0.00      Tipo: 3      Sent: 0

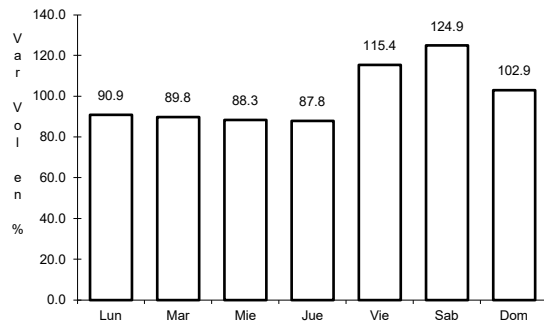


Km: 110.00      Tipo: 1      Sent: 0

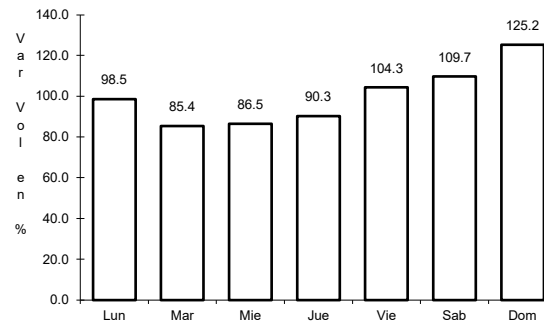
47 CARR: Chihuahua - Madera

CLAVE: 08038

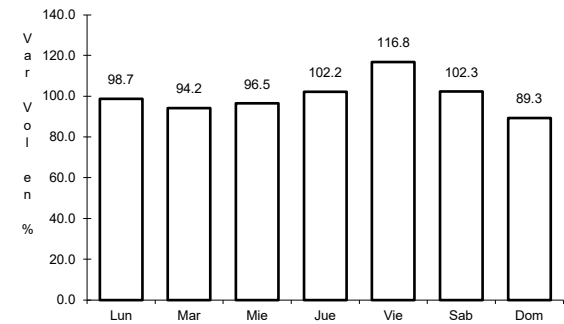
ruta: CHIH-D-MEX-001-CHIH



Km: 10.50      Tipo: 1      Sent: 1



Km: 10.50      Tipo: 1      Sent: 2

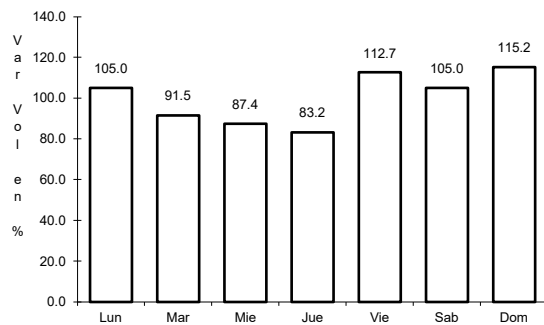


Km: 261.30      Tipo: 3      Sent: 0

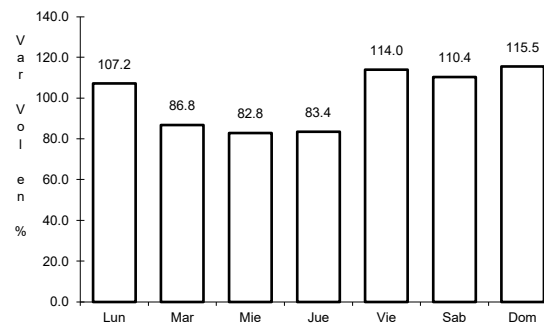
48 CARR: Ent. Agua Caliente - El Terrero

CLAVE: 08170

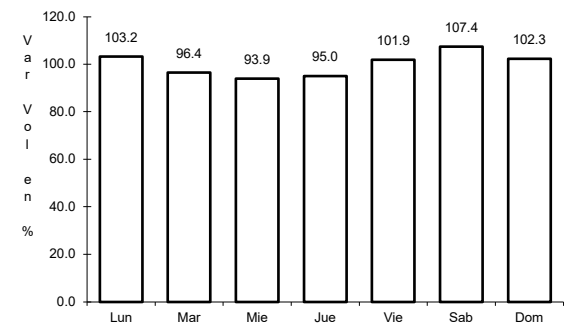
ruta: CHIH-MEX



Km: 0.00      Tipo: 3      Sent: 0



Km: 22.00      Tipo: 1      Sent: 0



Km: 120.00      Tipo: 1      Sent: 0